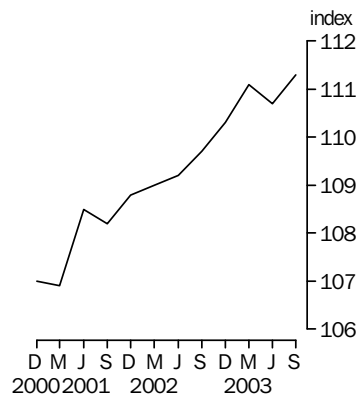


PRODUCER PRICE INDEXES AUSTRALIA

EMBARGO: 11.30AM (CANBERRA TIME) MON 20 OCT 2003

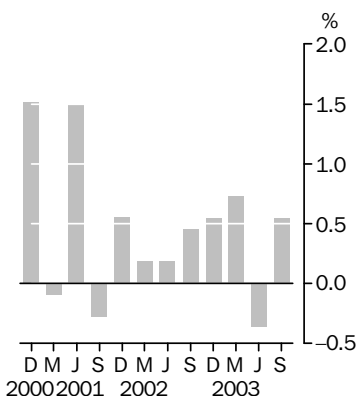
Final Stage

Base: 1998-99 = 100.0



Final Stage

Quarterly % change



INQUIRIES

- For further information about these and related statistics, contact the National Information and Referral Service on 1300 135 070 or Steve Whennan on Canberra (02) 6252 6251.

KEY FIGURES

STAGE OF PRODUCTION	Jun Qtr 03 to	Sep Qtr 02 to
	Sep Qtr 03	Sep Qtr 03
	% change	% change
Final (Stage 3) commodities (excl. exports)	0.5	1.5
Domestic	1.3	4.3
Imports	-3.2	-10.5
Intermediate (Stage 2) commodities	-0.4	0.8
Domestic	0.1	2.6
Imports	-3.6	-9.4
Preliminary (Stage 1) commodities	-0.4	0.6
Domestic	0.0	2.1
Imports	-3.6	-8.5

KEY POINTS

FINAL (STAGE 3) COMMODITIES

- The final (Stage 3) index rose 0.5% in the September quarter.
- The final (Stage 3) domestic index rose 1.3%, mainly due to increases in prices of building construction.
- The final (Stage 3) imports index fell -3.2%, due to exchange-rate driven price falls for a wide range of imported goods. There were some partially offsetting price increases for refined petroleum products.

INTERMEDIATE (STAGE 2) COMMODITIES

- The intermediate (Stage 2) index fell -0.4% in the September quarter.
- The intermediate (Stage 2) domestic index rose 0.1%, mainly as a result of increases in prices for a variety of business services, and electricity, gas and water supply. These were offset by price falls in grain, sheep, beef and dairy cattle farm products.
- The intermediate (Stage 2) imports index fell -3.6%, due a price drop in a wide range of products caused by the appreciation of the Australian dollar. These price falls were partially offset by price increases in refined petroleum products.

PRELIMINARY (STAGE 1) COMMODITIES

- The preliminary (Stage 1) index fell -0.4% in the September quarter.
- The preliminary (Stage 1) domestic index showed no change. Price decreases for oil and gas extraction were offset by price increases for electricity, gas and water supply and a variety of business services.
- The preliminary (Stage 1) imports index fell -3.6%, due to exchange-rate driven price falls for many imported goods, partially offset by increases in refined petroleum products.

NOTES

FORTHCOMING ISSUES

<i>ISSUE (Quarter)</i>	<i>RELEASE DATE</i>
December 2003	27 January 2004
March 2004	27 April 2004

.....

CHANGES IN THIS ISSUE

There are no changes in this issue.

RELATED STATISTICS

For more information about statistics in this publication and about other 'ABS data available on request', contact Steve Whennan on 02 6252 6251, or email <steve.whennan@abs.gov.au>.

.....

ABBREVIATIONS

ABS	Australian Bureau of Statistics
ANZSIC	Australian and New Zealand Standard Industrial Classification
c.i.f.	cost, insurance and freight
f.o.b.	free on board
n.e.c.	not elsewhere classified
n.e.s.	not elsewhere specified
SOP	stage of production

Dennis Trewin
Australian Statistician

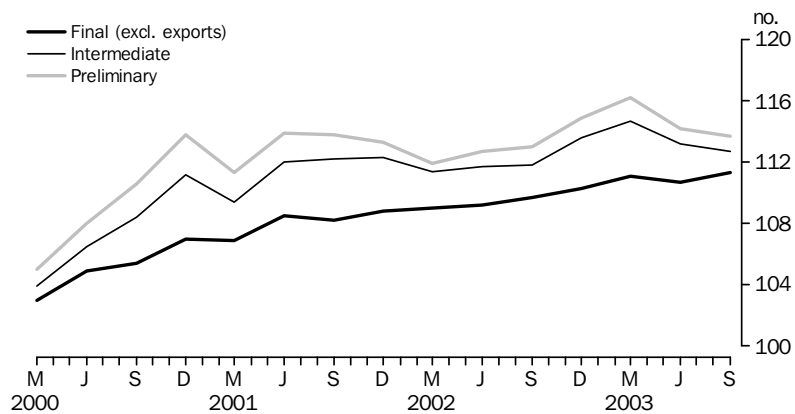
COMMENTARY

STAGE OF PRODUCTION OVERVIEW

The final (Stage 3) stage of production producer price index increased by 0.5% in the September quarter 2003, whereas the intermediate (Stage 2) and preliminary (Stage 1) indexes both fell -0.4%. Annual growth through the year to September quarter 2003 was 1.5% for the final (Stage 3) index, 0.8% for the intermediate (Stage 2) index and 0.6% for the preliminary (Stage 1) index.

For final (Stage 3) commodities, building construction, electricity, gas and water supply and petroleum refining were mostly responsible for the 0.5% increase in this index for the September quarter 2003. Largely offsetting these were significant price decreases for many imported products, particularly amongst all types of manufactured equipment. The most significant contributors to the -0.4% decline in both the intermediate (Stage 2) and preliminary (Stage 1) indexes were price falls observed for wheat and dairy farming, oil and gas extraction, and motor vehicle and part manufacturing. Partial offsets were observed with significant price increases for legal and accounting services, and for marketing and business management services.

COMPARISON OF SOP INDEXES



MANUFACTURING INDUSTRIES PRODUCER PRICE INDEXES

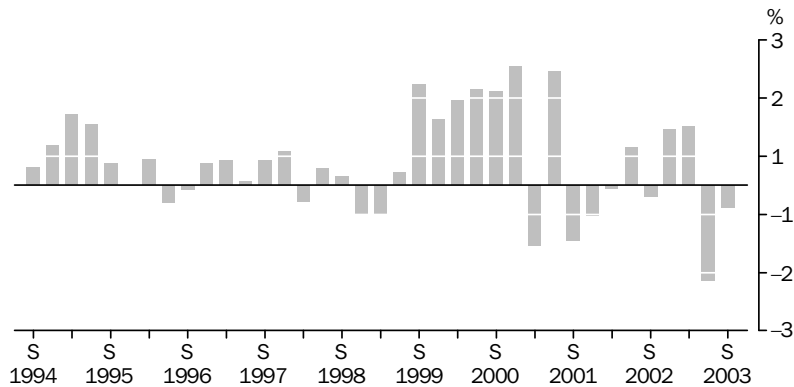
The input and output prices for the manufacturing industries decreased during the September quarter by -2.5% and -0.5% respectively. Significant appreciation of the Australian dollar against the US dollar and all other major currencies had a strong impact on the results for both the input and output indexes. The input and output price indexes decreased by -3.0% and -0.1%, respectively, through the year to September quarter 2003.

Decreases in the price of both domestic and imported crude oil were the main contributors to the quarterly result for the materials used in manufacturing industries index, with falls in wheat and meslin, and whole milk, also being significant contributors. Price increases for sheep and lamb, cattle and calves, and rice partly provided some offsets to these falls. Declining prices for diesel and beef contributed to the bulk of the decrease in the articles produced by manufacturing industries index for the September quarter, which were partially offset by increases for unleaded petrol.

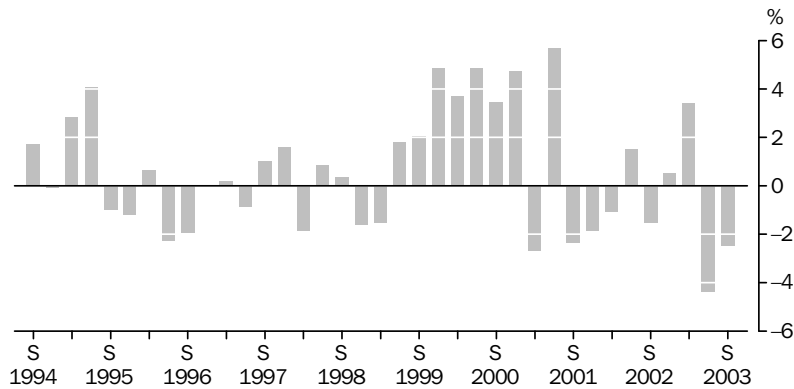
COMMENTARY *continued*

MANUFACTURING
INDUSTRIES PRODUCER
PRICE INDEXES *continued*

ARTICLES PRODUCED BY MANUFACTURING INDUSTRIES:
All Groups, Quarterly % change



MATERIALS USED IN MANUFACTURING INDUSTRIES:
All Groups, Quarterly % change



CONSTRUCTION
INDUSTRIES PRODUCER
PRICE INDEXES

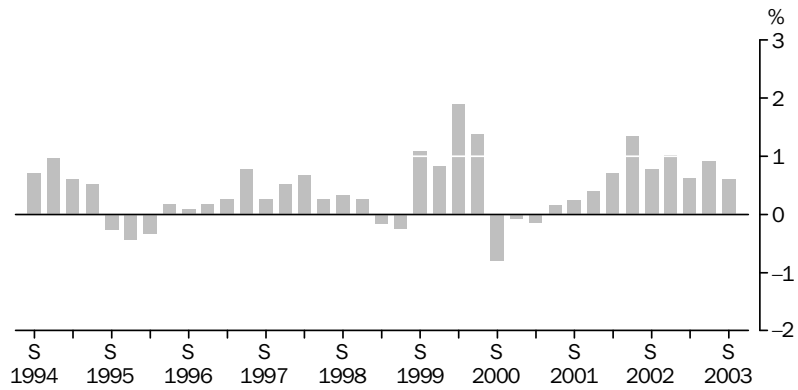
The price indexes for materials used in house building and materials used in building other than house building increased by 0.6% and 0.5%, respectively, in the September quarter 2003. For both indexes, price increases were observed for a wide range of materials. Cupboards and fittings and clay bricks were significant contributors to the increase observed for the materials used in house building price index. Structural steel products made the major contribution to the increase in the index of materials used in building other than house building.

Through the year to September quarter 2003, the materials used in house building index rose 3.2%, compared with an increase of 3.9% for the index of materials used in building other than house building. Other significant contributors to the increase in the materials used in house building price index were ready mixed concrete, aluminium windows and doors, and reinforcing steel. Few offsetting price decreases were recorded for this price index, with the largest being for plastic pipes and fittings. Price increases for precast concrete products and clay bricks contributed significantly to the increase recorded for the materials used in building other than house building price index, with small offsets provided by plastic pipes and fittings. All State capital city indexes recorded increases in the September quarter 2003, ranging from 0.4% in Melbourne and Adelaide to 0.9% in Sydney for the materials used in house building price index, and from 0.3% in Melbourne to 0.6% in Sydney for the materials used in building other than house building price index.

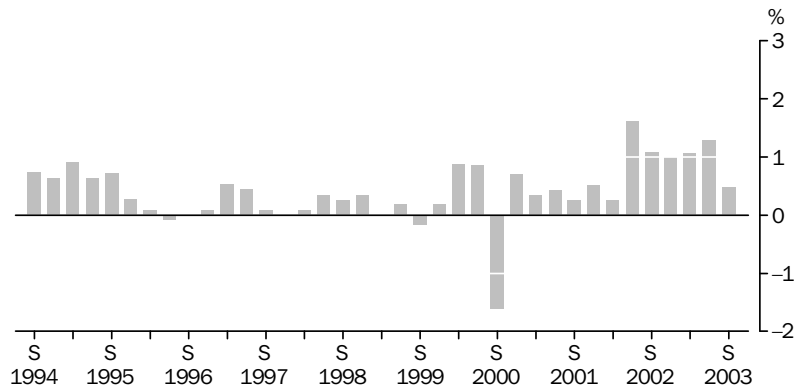
COMMENTARY *continued*

CONSTRUCTION
INDUSTRIES PRODUCER
PRICE INDEXES *continued*

MATERIALS USED IN HOUSE BUILDING:
All Groups, Quarterly % change



MATERIALS USED IN BUILDING OTHER THAN HOUSE BUILDING:
All Groups, Quarterly % change

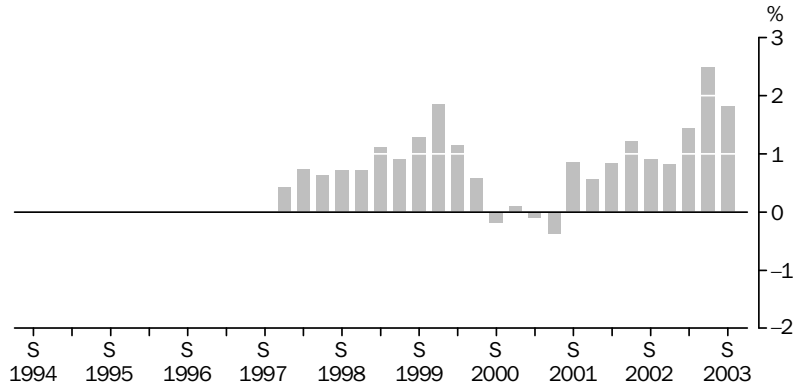


The price index for the output of the general construction industry increased by 1.8% in the September quarter 2003 and by 6.7% for the year ending September quarter 2003. Increases were registered across the quarter for all component industries, with indexes for residential building construction other than houses (2.1%) and non-residential building construction (2.1%) being the largest. Increases were also recorded for the house construction index (1.8%), and the road and bridge construction index (0.8%). Significant contributors to these increases were continued high demand and increases in the price of inputs, both labour and materials.

COMMENTARY *continued*

CONSTRUCTION INDUSTRIES
PRODUCER PRICE INDEXES
continued

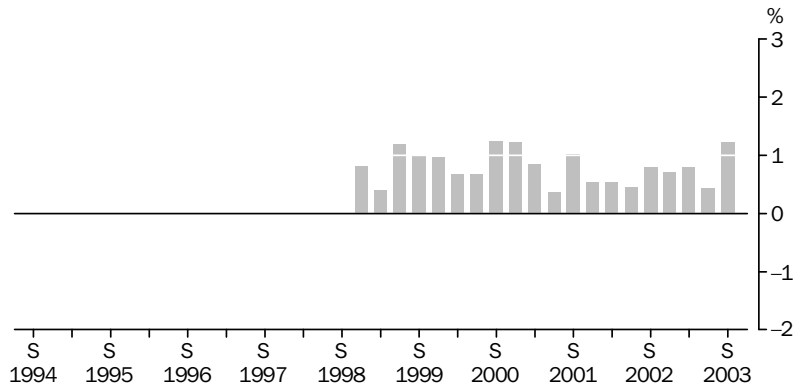
**OUTPUT OF THE GENERAL CONSTRUCTION INDUSTRY:
All Groups, Quarterly % change**



SERVICE INDUSTRIES
PRODUCER PRICE
INDEXES

The property and business services industries price index increased by 1.2% in the September quarter. Annually the index increased 3.2% to September quarter 2003. The price index for property services increased by 1.1% this quarter. Within property services all indexes showed increases, with the price index of real estate agents continuing to be the largest contributor to the increase, gaining 3.9% for the September quarter. For the period September quarter 2002 to September quarter 2003, the real estate agent index rose 12.3%. The business services index rose 1.3% for the September quarter 2003. The main contributors were legal services (3.3%) and consultant engineering (4.1%). A number of small decreases were also recorded this quarter for commercial art display, market research, architecture and employment placement services.

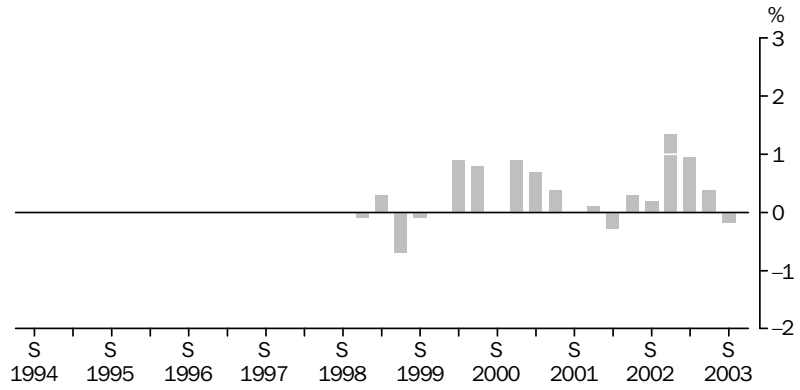
**PRICE INDEXES OF SERVICES DIVISION L (PROPERTY AND BUSINESS):
All Groups, Quarterly % change**



The transport (freight) and storage industries index decreased by -0.2% in the September quarter 2003, compared with a 0.4% increase in the June 2003 quarter. Annually the index rose 2.5% from September quarter 2002 to September quarter 2003. The main contributors to this quarter's decrease were international sea transport with a -5.3% decrease and rail transport with a -0.6% decrease. These decreases were partially offset by a number of increases in small components including 5.4% in parking services. The storage index increased by 0.2% in the September quarter.

COMMENTARY *continued*

PRICE INDEXES OF SERVICES DIVISION I (TRANSPORT AND STORAGE):
All Groups, Quarterly % change



LIST OF TABLES

page

STAGE OF PRODUCTION PRODUCER PRICE INDEXES

1	Index numbers by stage and source	11
2	Percentage change by stage and source	12
3	Final commodities by source and destination	13
4	Percentage change, final commodities by source and destination	14
5	Contribution to change in final commodities index by industry and source	15
6	Contribution to change in domestic final commodities index by industry and destination	16
7	Contribution to change in imported final commodities index by industry and destination	17
8	Contribution to change in intermediate commodities index by industry and source	18
9	Contribution to change in preliminary commodities index by industry and source	19

MANUFACTURING INDUSTRIES PRODUCER PRICE INDEXES

10	Articles produced by manufacturing industries, division index numbers and percentage changes	20
11	Articles produced by manufacturing industries, subdivision and group index numbers	21
12	Materials used in manufacturing industries, division index numbers	23
13	Materials used in manufacturing industries, division percentage changes	24
14	Materials used in manufacturing industries, subdivision and group index numbers	25

CONSTRUCTION INDUSTRIES PRODUCER PRICE INDEXES

15	Output of the general construction industry, subdivision index numbers and percentage changes	27
16	Output of the general construction industry, group and class indexes	28
17	Materials used in house building, index numbers by state capital city	29
18	Materials used in house building, percentage changes by state capital city	30
19	Materials used in building other than house building, index numbers by state capital city	31
20	Materials used in building other than house building, percentage changes by state capital city	32

MINING INDUSTRIES PRODUCER PRICE INDEXES

21	Materials used in coal mining, index numbers and percentage changes	33
-----------	---	----

SERVICE INDUSTRIES PRODUCER PRICE INDEXES

22	Output of transport (freight) and storage industries, division index numbers and percentage changes	34
-----------	---	----

LIST OF TABLES *continued*

	<i>page</i>
23 Output of transport (freight) and storage industries, subdivision index numbers	35
24 Output of property and business services industries, division index numbers and percentage changes	36
25 Output of property and business services industries, subdivision and group index numbers	37

ADDITIONAL TABLES AVAILABLE ON ABS WEB SITE

STAGE OF PRODUCTION PRODUCER PRICE INDEXES

- 26** Stage of production, index numbers, final commodities by source and destination, including exports
- 27** Stage of production, percentage change, final commodities by source and destination, including exports

PRICE INDEXES OF ARTICLES PRODUCED BY MANUFACTURING INDUSTRIES

- 28** Price indexes of articles produced by manufacturing industries, contribution of subdivisions and groups

PRICE INDEXES OF MATERIALS USED IN MANUFACTURING INDUSTRIES

- 29** Price index of materials used in manufacturing industries, contribution of materials by ANZSIC industry of origin
- 30** Price index of materials used in manufacturing industries, indexes of metallic materials used in the fabricated metal products industry

PRICE INDEX OF MATERIALS USED IN HOUSE BUILDING

- 31** Price index of materials used in house building, six state capital cities, contribution to all groups index
- 32** Price index of materials used in house building, six state capital cities, by materials group

PRICE INDEX OF MATERIALS USED IN BUILDING OTHER THAN HOUSE BUILDING

- 33** Price index of materials used in building other than house building, six state capital cities, all groups index, contribution of major building materials
- 34** Price index of materials used in building other than house building, six state capital cities, selected ANZSIC groups, index numbers
- 35** Price index of materials used in building other than house building, six state capital cities, selected building materials, index numbers
- 36** Price index of materials used in building other than house building, six state capital cities, selected major building materials, index numbers, Sydney and Melbourne
- 37** Price index of materials used in building other than house building, six state capital cities, selected major building materials, index numbers, Brisbane and Adelaide

LIST OF TABLES *continued*

- 38** Price index of materials used in building other than house building, six state capital cities, selected major building materials, index numbers, Perth and Hobart
- 39** Price index of materials used in building other than house building, six state capital cities, special series, index numbers, weighted average of six state capital cities
- 40** Price index of materials used in building other than house building, six state capital cities, special series, index numbers, Sydney and Melbourne
- 41** Price index of materials used in building other than house building, six state capital cities, special series, index numbers, Brisbane and Adelaide
- 42** Price index of materials used in building other than house building, six state capital cities, special series, index numbers, Perth and Hobart

PRODUCER PRICE INDEXES FOR SELECTED SERVICE INDUSTRIES

- 43** Producer price indexes for selected service industries, transport (freight) and storage division index, subdivision and group contributions
- 44** Producer price indexes for selected service industries, property and business services division, subdivision and group contributions
- 45** Producer price indexes for selected service industries, transport (freight) and storage subdivision group and class indexes
- 46** Producer price indexes for selected service industries, property and business services subdivision group and class indexes

PRICE INDEXES OF COPPER MATERIALS

- 47** Copper materials used in the manufacture of electrical equipment, index numbers and percentage changes

STAGE OF PRODUCTION(a): Index numbers

Period	PRELIMINARY			INTERMEDIATE			FINAL(b)		
	Domestic	Imports	Total	Domestic	Imports	Total	Domestic	Imports	Total
1999-2000	104.1	107.1	104.5	103.4	104.4	103.6	104.3	95.7	102.6
2000-01	110.3	126.1	112.4	108.9	119.7	110.3	107.7	104.0	107.0
2001-02	111.8	120.3	112.9	111.3	115.9	111.9	110.0	103.7	108.8
2002-03	114.3	117.4	114.6	113.6	112.1	113.3	113.7	97.5	110.5
1998									
December	100.0	101.0	100.1	100.0	101.2	100.2	99.5	101.7	99.9
1999									
March	99.2	97.6	99.0	99.3	98.4	99.2	99.9	99.2	99.7
June	100.3	98.2	100.0	100.1	97.6	99.8	100.9	95.6	99.9
September	102.0	100.1	101.7	101.5	99.1	101.2	102.4	94.2	100.8
December	103.3	103.6	103.3	102.7	101.9	102.6	103.3	95.0	101.7
2000									
March	104.5	108.6	105.0	103.7	105.1	103.9	105.0	94.7	103.0
June	106.7	116.2	108.0	105.7	111.6	106.5	106.4	98.9	104.9
September	109.0	121.0	110.6	107.5	114.4	108.4	106.8	99.5	105.4
December	111.0	131.7	113.8	109.3	124.1	111.2	107.5	105.1	107.0
2001									
March	109.6	122.8	111.3	108.2	117.5	109.4	107.6	103.7	106.9
June	111.7	129.0	113.9	110.4	122.9	112.0	108.7	107.6	108.5
September	112.2	124.7	113.8	111.2	118.9	112.2	109.0	104.7	108.2
December	111.9	122.6	113.3	111.5	118.1	112.3	109.4	106.1	108.8
2002									
March	111.1	116.9	111.9	111.0	113.9	111.4	110.3	103.6	109.0
June	112.1	117.1	112.7	111.5	112.8	111.7	111.3	100.3	109.2
September	112.3	118.2	113.0	111.5	113.8	111.8	111.9	100.5	109.7
December	114.2	120.0	114.9	113.4	114.5	113.6	112.9	99.6	110.3
2003									
March	115.8	119.3	116.2	115.0	113.0	114.7	114.6	97.1	111.1
June	114.7	112.1	114.2	114.3	106.9	113.2	115.2	92.9	110.7
September	114.7	108.1	113.7	114.4	103.1	112.7	116.7	89.9	111.3

(a) Reference base of each index: 1998-99 = 100.0.

(b) Excluding exports.

STAGE OF PRODUCTION: Percentage change

Period	PRELIMINARY			INTERMEDIATE			FINAL (a)		
	Domestic	Imports	Total	Domestic	Imports	Total	Domestic	Imports	Total
PERCENTAGE CHANGE FROM PREVIOUS YEAR									
1999-2000	4.1	7.1	4.5	3.4	4.4	3.6	4.3	-4.3	2.6
2000-01	6.0	17.7	7.6	5.3	14.7	6.5	3.3	8.7	4.3
2001-02	1.4	-4.6	0.4	2.2	-3.2	1.5	2.1	-0.3	1.7
2002-03	2.2	-2.4	1.5	2.1	-3.3	1.3	3.4	-6.0	1.6
PERCENTAGE CHANGE FROM PREVIOUS QUARTER									
1999									
March	-0.8	-3.4	-1.1	-0.7	-2.8	-1.0	0.4	-2.5	-0.2
June	1.1	0.6	1.0	0.8	-0.8	0.6	1.0	-3.6	0.2
September	1.7	1.9	1.7	1.4	1.5	1.4	1.5	-1.5	0.9
December	1.3	3.5	1.6	1.2	2.8	1.4	0.9	0.8	0.9
2000									
March	1.2	4.8	1.6	1.0	3.1	1.3	1.6	-0.3	1.3
June	2.1	7.0	2.9	1.9	6.2	2.5	1.3	4.4	1.8
September	2.2	4.1	2.4	1.7	2.5	1.8	0.4	0.6	0.5
December	1.8	8.8	2.9	1.7	8.5	2.6	0.7	5.6	1.5
2001									
March	-1.3	-6.8	-2.2	-1.0	-5.3	-1.6	0.1	-1.3	-0.1
June	1.9	5.0	2.3	2.0	4.6	2.4	1.0	3.8	1.5
September	0.4	-3.3	-0.1	0.7	-3.3	0.2	0.3	-2.7	-0.3
December	-0.3	-1.7	-0.4	0.3	-0.7	0.1	0.4	1.3	0.6
2002									
March	-0.7	-4.6	-1.2	-0.4	-3.6	-0.8	0.8	-2.4	0.2
June	0.9	0.2	0.7	0.5	-1.0	0.3	0.9	-3.2	0.2
September	0.2	0.9	0.3	—	0.9	0.1	0.5	0.2	0.5
December	1.7	1.5	1.7	1.7	0.6	1.6	0.9	-0.9	0.5
2003									
March	1.4	-0.6	1.1	1.4	-1.3	1.0	1.5	-2.5	0.7
June	-0.9	-6.0	-1.7	-0.6	-5.4	-1.3	0.5	-4.3	-0.4
September	—	-3.6	-0.4	0.1	-3.6	-0.4	1.3	-3.2	0.5
PERCENTAGE CHANGE FROM CORRESPONDING QUARTER OF PREVIOUS YEAR									
1999									
March	na	na	na	na	na	na	na	na	na
June	na	na	na	na	na	na	na	na	na
September	1.4	-3.1	0.8	0.9	-3.6	0.3	2.7	-9.0	0.3
December	3.3	2.6	3.2	2.7	0.7	2.4	3.8	-6.6	1.8
2000									
March	5.3	11.3	6.1	4.4	6.8	4.7	5.1	-4.5	3.3
June	6.4	18.3	8.0	5.6	14.3	6.7	5.5	3.5	5.0
September	6.9	20.9	8.8	5.9	15.4	7.1	4.3	5.6	4.6
December	7.5	27.1	10.2	6.4	21.8	8.4	4.1	10.6	5.2
2001									
March	4.9	13.1	6.0	4.3	11.8	5.3	2.5	9.5	3.8
June	4.7	11.0	5.5	4.4	10.1	5.2	2.2	8.8	3.4
September	2.9	3.1	2.9	3.4	3.9	3.5	2.1	5.2	2.7
December	0.8	-6.9	-0.4	2.0	-4.8	1.0	1.8	1.0	1.7
2002									
March	1.4	-4.8	0.5	2.6	-3.1	1.8	2.5	-0.1	2.0
June	0.4	-9.2	-1.1	1.0	-8.2	-0.3	2.4	-6.8	0.6
September	0.1	-5.2	-0.7	0.3	-4.3	-0.4	2.7	-4.0	1.4
December	2.1	-2.1	1.4	1.7	-3.0	1.2	3.2	-6.1	1.4
2003									
March	4.2	2.1	3.8	3.6	-0.8	3.0	3.9	-6.3	1.9
June	2.3	-4.3	1.3	2.5	-5.2	1.3	3.5	-7.4	1.4
September	2.1	-8.5	0.6	2.6	-9.4	0.8	4.3	-10.5	1.5

— nil or rounded to zero (including null cells)
na not available

(a) Excluding exports.

STAGE OF PRODUCTION(a): Final Commodities

Period	DOMESTIC(b)			IMPORTS			TOTAL(b)		
	Consumer	Capital	Total	Consumer	Capital	Total	Consumer	Capital	Total
1999-2000	103.6	104.9	104.3	96.6	94.6	95.7	102.2	103.0	102.6
2000-01	107.2	108.2	107.7	105.7	102.0	104.0	106.9	107.0	107.0
2001-02	109.4	110.7	110.0	106.4	100.7	103.7	108.8	108.8	108.8
2002-03	112.3	115.0	113.7	101.0	93.6	97.5	109.9	111.0	110.5
1998									
December	99.6	99.4	99.5	101.2	102.2	101.7	99.9	99.9	99.9
1999									
March	99.6	100.1	99.9	99.1	99.4	99.2	99.5	99.9	99.7
June	100.2	101.6	100.9	96.7	94.4	95.6	99.5	100.3	99.9
September	102.2	102.5	102.4	95.2	93.2	94.2	100.8	100.8	100.8
December	102.6	104.1	103.3	95.8	94.0	95.0	101.2	102.2	101.7
2000									
March	104.0	105.9	105.0	95.8	93.4	94.7	102.4	103.6	103.0
June	105.7	107.1	106.4	99.7	97.9	98.9	104.5	105.3	104.9
September	106.2	107.4	106.8	101.4	97.3	99.5	105.3	105.5	105.4
December	106.7	108.3	107.5	106.6	103.3	105.1	106.7	107.4	107.0
2001									
March	106.8	108.5	107.6	105.1	102.1	103.7	106.5	107.3	106.9
June	108.9	108.5	108.7	109.6	105.3	107.6	109.0	107.9	108.5
September	108.6	109.5	109.0	107.0	102.1	104.7	108.2	108.1	108.2
December	108.8	110.1	109.4	108.4	103.6	106.1	108.7	108.9	108.8
2002									
March	109.6	111.0	110.3	106.6	100.2	103.6	109.0	109.0	109.0
June	110.6	112.1	111.3	103.4	96.8	100.3	109.2	109.2	109.2
September	110.7	113.1	111.9	103.1	97.5	100.5	109.2	110.2	109.7
December	111.9	114.0	112.9	102.8	96.0	99.6	110.1	110.6	110.3
2003									
March	113.9	115.4	114.6	101.3	92.4	97.1	111.2	111.1	111.1
June	112.6	117.5	115.2	96.8	88.5	92.9	109.2	112.0	110.7
September	113.6	119.3	116.7	94.2	85.3	89.9	109.4	112.9	111.3

(a) Reference base of each index: 1998-99 = 100.0.

(b) Excluding exports.

STAGE OF PRODUCTION: Final commodities percentage change

Period	DOMESTIC(a)			IMPORTS			TOTAL(a)		
	Consumer	Capital	Total	Consumer	Capital	Total	Consumer	Capital	Total
PERCENTAGE CHANGE FROM PREVIOUS YEAR									
1999-2000	3.6	4.9	4.3	-3.4	-5.4	-4.3	2.2	3.0	2.6
2000-01	3.5	3.1	3.3	9.4	7.8	8.7	4.6	3.9	4.3
2001-02	2.1	2.3	2.1	0.7	-1.3	-0.3	1.8	1.7	1.7
2002-03	2.7	3.9	3.4	-5.1	-7.1	-6.0	1.0	2.0	1.6
PERCENTAGE CHANGE FROM PREVIOUS QUARTER									
1999									
March	—	0.7	0.4	-2.1	-2.7	-2.5	-0.4	—	-0.2
June	0.6	1.5	1.0	-2.4	-5.0	-3.6	—	0.4	0.2
September	2.0	0.9	1.5	-1.6	-1.3	-1.5	1.3	0.5	0.9
December	0.4	1.6	0.9	0.6	0.9	0.8	0.4	1.4	0.9
2000									
March	1.4	1.7	1.6	—	-0.6	-0.3	1.2	1.4	1.3
June	1.6	1.1	1.3	4.1	4.8	4.4	2.1	1.6	1.8
September	0.5	0.3	0.4	1.7	-0.6	0.6	0.8	0.2	0.5
December	0.5	0.8	0.7	5.1	6.2	5.6	1.3	1.8	1.5
2001									
March	0.1	0.2	0.1	-1.4	-1.2	-1.3	-0.2	-0.1	-0.1
June	2.0	—	1.0	4.3	3.1	3.8	2.3	0.6	1.5
September	-0.3	0.9	0.3	-2.4	-3.0	-2.7	-0.7	0.2	-0.3
December	0.2	0.5	0.4	1.3	1.5	1.3	0.5	0.7	0.6
2002									
March	0.7	0.8	0.8	-1.7	-3.3	-2.4	0.3	0.1	0.2
June	0.9	1.0	0.9	-3.0	-3.4	-3.2	0.2	0.2	0.2
September	0.1	0.9	0.5	-0.3	0.7	0.2	—	0.9	0.5
December	1.1	0.8	0.9	-0.3	-1.5	-0.9	0.8	0.4	0.5
2003									
March	1.8	1.2	1.5	-1.5	-3.8	-2.5	1.0	0.5	0.7
June	-1.1	1.8	0.5	-4.4	-4.2	-4.3	-1.8	0.8	-0.4
September	0.9	1.5	1.3	-2.7	-3.6	-3.2	0.2	0.8	0.5
PERCENTAGE CHANGE FROM CORRESPONDING QUARTER OF PREVIOUS YEAR									
1999									
March	na	na	na	na	na	na	na	na	na
June	na	na	na	na	na	na	na	na	na
September	1.7	3.6	2.7	-7.5	-10.5	-9.0	-0.2	0.9	0.3
December	3.0	4.7	3.8	-5.3	-8.0	-6.6	1.3	2.3	1.8
2000									
March	4.4	5.8	5.1	-3.3	-6.0	-4.5	2.9	3.7	3.3
June	5.5	5.4	5.5	3.1	3.7	3.5	5.0	5.0	5.0
September	3.9	4.8	4.3	6.5	4.4	5.6	4.5	4.7	4.6
December	4.0	4.0	4.1	11.3	9.9	10.6	5.4	5.1	5.2
2001									
March	2.7	2.5	2.5	9.7	9.3	9.5	4.0	3.6	3.8
June	3.0	1.3	2.2	9.9	7.6	8.8	4.3	2.5	3.4
September	2.3	2.0	2.1	5.5	4.9	5.2	2.8	2.5	2.7
December	2.0	1.7	1.8	1.7	0.3	1.0	1.9	1.4	1.7
2002									
March	2.6	2.3	2.5	1.4	-1.9	-0.1	2.3	1.6	2.0
June	1.6	3.3	2.4	-5.7	-8.1	-6.8	0.2	1.2	0.6
September	1.9	3.3	2.7	-3.6	-4.5	-4.0	0.9	1.9	1.4
December	2.8	3.5	3.2	-5.2	-7.3	-6.1	1.3	1.6	1.4
2003									
March	3.9	4.0	3.9	-5.0	-7.8	-6.3	2.0	1.9	1.9
June	1.8	4.8	3.5	-6.4	-8.6	-7.4	—	2.6	1.4
September	2.6	5.5	4.3	-8.6	-12.5	-10.5	0.2	2.5	1.5

— nil or rounded to zero (including null cells)
na not available

(a) Excluding exports.

STAGE OF PRODUCTION(a): Final commodities index points change

ANZSIC		DOMESTIC			IMPORTS			TOTAL		
		Jun	Sep	Change	Jun	Sep	Change	Jun	Sep	Change
		Qtr	Qtr		Qtr	Qtr		Qtr		
		2003	2003		2003	2003		2003	2003	
012-013	Grain, sheep, beef & dairy cattle farming	0.20	0.20	—	0.16	0.16	—
011,014-016	Other agriculture	2.12	2.13	0.01	1.68	1.68	—
04	Commercial fishing	0.90	0.97	0.07	0.71	0.77	0.06
211	Meat & meat product mfg	3.13	3.02	-0.11	2.48	2.39	-0.09
212	Dairy product mfg	2.72	2.74	0.02	0.90	0.89	-0.01	2.35	2.36	0.01
213	Fruit & vegetable processing	1.76	1.75	-0.01	1.56	1.54	-0.02	1.72	1.71	-0.01
214	Oil & fat mfg	0.40	0.41	0.01	0.08	0.09	0.01
215	Flour mill & cereal food mfg	0.90	0.90	—	0.71	0.71	—
216	Bakery product mfg	2.04	2.06	0.02	1.62	1.64	0.02
217	Other food mfg	3.53	3.52	-0.01	3.58	3.40	-0.18	3.54	3.51	-0.03
218	Beverage & malt mfg	3.47	3.53	0.06	2.38	2.33	-0.05	3.25	3.29	0.04
219	Tobacco product mfg	0.77	0.79	0.02	1.88	1.79	-0.09	1.00	1.00	—
221	Textile fibre, yarn & woven fabric mfg	0.31	0.31	—	0.62	0.60	-0.02	0.37	0.37	—
222	Textile product mfg	0.52	0.52	—	0.64	0.60	-0.04	0.54	0.53	-0.01
223	Knitting mills	0.29	0.29	—	0.59	0.57	-0.02	0.36	0.35	-0.01
224	Clothing mfg	1.90	1.91	0.01	4.25	4.12	-0.13	2.40	2.37	-0.03
225	Footwear mfg	0.26	0.26	—	1.30	1.24	-0.06	0.48	0.47	-0.01
226	Leather & leather product mfg	1.00	0.94	-0.06	0.21	0.20	-0.01
232-233	Other wood, paper & paper product mfg	0.74	0.75	0.01	0.58	0.59	0.01
241	Printing & services to printing	0.40	0.40	—	0.07	0.07	—	0.33	0.33	—
242	Publishing	1.32	1.33	0.01	0.80	0.79	-0.01	1.21	1.22	0.01
243	Recorded media mfg & publishing	0.17	0.17	—	1.15	1.10	-0.05	0.38	0.36	-0.02
251	Petroleum refining	2.09	2.20	0.11	1.00	1.16	0.16	1.87	1.99	0.12
253	Basic chemical mfg	0.36	0.34	-0.02	0.07	0.07	—
254	Other chemical product mfg	2.14	2.15	0.01	4.74	4.70	-0.04	2.69	2.68	-0.01
255	Rubber product mfg	0.12	0.12	—	0.59	0.57	-0.02	0.21	0.21	—
256	Plastic product mfg	0.84	0.84	—	0.82	0.79	-0.03	0.84	0.83	-0.01
271	Iron & steel mfg	0.10	0.10	—	0.02	0.02	—
273	Non-ferrous basic metal product mfg	0.18	0.18	—	0.04	0.04	—
275	Sheet metal product mfg	0.27	0.27	—	0.21	0.21	—
276	Fabricated metal product mfg	0.18	0.18	—	1.05	1.02	-0.03	0.36	0.35	-0.01
281	Motor vehicle & part mfg	5.90	5.93	0.03	19.24	18.92	-0.32	8.69	8.64	-0.05
282	Other transport equipment mfg	0.51	0.51	—	4.26	4.16	-0.10	1.29	1.27	-0.02
283	Photographic & scientific equipment mfg	0.21	0.20	-0.01	4.22	4.14	-0.08	1.04	1.02	-0.02
284	Electronic equipment mfg	0.77	0.75	-0.02	13.16	12.22	-0.94	3.35	3.14	-0.21
285	Electrical equipment & household appliance mfg	1.51	1.52	0.01	3.96	3.83	-0.13	2.03	2.00	-0.03
286	Industrial machinery & equipment mfg	1.67	1.68	0.01	12.62	12.22	-0.40	3.96	3.88	-0.08
29	Other mfg	2.99	2.99	—	5.45	5.20	-0.25	3.51	3.45	-0.06
36-37	Electricity, gas & water supply	6.52	6.70	0.18	5.17	5.32	0.15
411	Building construction	44.58	45.45	0.87	35.36	36.05	0.69
412	Non-building construction	4.55	4.58	0.03	3.61	3.64	0.03
571	Accommodation	1.35	1.36	0.01	1.07	1.08	0.01
611	Road freight transport	1.49	1.49	—	1.18	1.19	0.01
620	Rail transport	0.42	0.41	-0.01	0.33	0.33	—
630-640	Water, air & space transport	0.33	0.32	-0.01	0.27	0.26	-0.01
66	Services to transport	1.64	1.66	0.02	1.30	1.32	0.02
772	Real estate agents	2.39	2.48	0.09	1.90	1.97	0.07
782	Technical services	0.94	0.97	0.03	0.75	0.77	0.02
783	Computer services	3.74	3.74	—	2.96	2.96	—
784	Legal & accounting services	0.58	0.60	0.02	0.46	0.47	0.01
	Total	115.2	116.7	1.5	92.9	89.9	-3.0	110.7	111.3	0.6

— nil or rounded to zero (including null cells)

(a) Reference base of each index: 1998-99 = 100.0.

.. not applicable

STAGE OF PRODUCTION(a): Domestic final commodities index points change

ANZSIC		CONSUMER			CAPITAL			TOTAL		
		Jun	Sep	Change	Jun	Sep	Change	Jun	Sep	Change
		Qtr	Qtr		Qtr	Qtr		Qtr		
		2003	2003		2003	2003		2003	2003	
012-013	Grain, sheep, beef & dairy cattle farming	0.46	0.46	—	0.20	0.20	—
011,014-016	Other agriculture	4.85	4.85	—	2.12	2.13	0.01
04	Commercial fishing	2.07	2.22	0.15	0.90	0.97	0.07
211	Meat & meat product mfg	7.15	6.90	-0.25	3.13	3.02	-0.11
212	Dairy product mfg	6.23	6.27	0.04	2.72	2.74	0.02
213	Fruit & vegetable processing	4.03	4.01	-0.02	1.76	1.75	-0.01
215	Flour mill & cereal food mfg	2.05	2.05	—	0.90	0.90	—
216	Bakery product mfg	4.66	4.72	0.06	2.04	2.06	0.02
217	Other food mfg	8.07	8.06	-0.01	3.53	3.52	-0.01
218	Beverage & malt mfg	7.94	8.08	0.14	3.47	3.53	0.06
219	Tobacco product mfg	1.76	1.80	0.04	0.77	0.79	0.02
221	Textile fibre, yarn & woven fabric mfg	0.71	0.71	—	0.31	0.31	—
222	Textile product mfg	1.19	1.18	-0.01	0.52	0.52	—
223	Knitting mills	0.67	0.67	—	0.29	0.29	—
224	Clothing mfg	4.35	4.36	0.01	1.90	1.91	0.01
225	Footwear mfg	0.60	0.60	—	0.26	0.26	—
232-233	Other wood, paper & paper product mfg	1.69	1.72	0.03	0.74	0.75	0.01
241	Printing & services to printing	0.91	0.91	—	0.40	0.40	—
242	Publishing	3.01	3.04	0.03	1.32	1.33	0.01
243	Recorded media mfg & publishing	0.39	0.39	—	0.17	0.17	—
251	Petroleum refining	4.78	5.04	0.26	2.09	2.20	0.11
254	Other chemical product mfg	4.90	4.91	0.01	2.14	2.15	0.01
255	Rubber product mfg	0.27	0.26	-0.01	0.12	0.12	—
256	Plastic product mfg	1.93	1.93	—	0.84	0.84	—
275	Sheet metal product mfg	0.48	0.48	—	0.27	0.27	—
276	Fabricated metal product mfg	0.32	0.31	-0.01	0.18	0.18	—
281	Motor vehicle & part mfg	5.91	5.96	0.05	5.90	5.91	0.01	5.90	5.93	0.03
282	Other transport equipment mfg	0.35	0.35	—	0.63	0.64	0.01	0.51	0.51	—
283	Photographic & scientific equipment mfg	0.37	0.36	-0.01	0.21	0.20	-0.01
284	Electronic equipment mfg	0.27	0.27	—	1.16	1.13	-0.03	0.77	0.75	-0.02
285	Electrical equipment & household appliance mfg	2.30	2.30	—	0.91	0.91	—	1.51	1.52	0.01
286	Industrial machinery & equipment mfg	2.98	3.00	0.02	1.67	1.68	0.01
29	Other mfg	2.26	2.25	-0.01	3.57	3.57	—	2.99	2.99	—
36-37	Electricity, gas & water supply	14.90	15.32	0.42	6.52	6.70	0.18
411	Building construction	79.42	80.97	1.55	44.58	45.45	0.87
412	Non-building construction	8.11	8.17	0.06	4.55	4.58	0.03
571	Accommodation	3.10	3.10	—	1.35	1.36	0.01
611	Road freight transport	3.41	3.42	0.01	1.49	1.49	—
620	Rail transport	0.95	0.95	—	0.42	0.41	-0.01
630-640	Water, air & space transport	0.76	0.74	-0.02	0.33	0.32	-0.01
66	Services to transport	3.77	3.81	0.04	1.64	1.66	0.02
772	Real estate agents	4.26	4.42	0.16	2.39	2.48	0.09
782	Technical services	1.68	1.73	0.05	0.94	0.97	0.03
783	Computer services	6.66	6.66	—	3.74	3.74	—
784	Legal & accounting services	1.03	1.07	0.04	0.58	0.60	0.02
	Total	112.6	113.6	1.0	117.5	119.3	1.8	115.2	116.7	1.5

— nil or rounded to zero (including null cells)

(a) Reference base of each index: 1998-99 = 100.0.

.. not applicable

STAGE OF PRODUCTION(a): Imported final commodities index points change

ANZSIC		CONSUMER			CAPITAL			TOTAL		
		Jun	Sep	Change	Jun	Sep	Change	Jun	Sep	Change
		Qtr	Qtr		Qtr	Qtr		Qtr		
		2003	2003		2003	2003		2003	2003	
212	Dairy product mfg	1.79	1.77	-0.02	0.90	0.89	-0.01
213	Fruit & vegetable processing	3.10	3.06	-0.04	1.56	1.54	-0.02
214	Oil & fat mfg	0.80	0.82	0.02	0.40	0.41	0.01
217	Other food mfg	7.11	6.76	-0.35	3.58	3.40	-0.18
218	Beverage & malt mfg	4.72	4.62	-0.10	2.38	2.33	-0.05
219	Tobacco product mfg	3.73	3.56	-0.17	1.88	1.79	-0.09
221	Textile fibre, yarn & woven fabric mfg	1.22	1.19	-0.03	0.62	0.60	-0.02
222	Textile product mfg	1.27	1.18	-0.09	0.64	0.60	-0.04
223	Knitting mills	1.17	1.13	-0.04	0.59	0.57	-0.02
224	Clothing mfg	8.44	8.17	-0.27	4.25	4.12	-0.13
225	Footwear mfg	2.59	2.46	-0.13	1.30	1.24	-0.06
226	Leather & leather product mfg	1.99	1.86	-0.13	1.00	0.94	-0.06
241	Printing & services to printing	0.15	0.15	—	0.07	0.07	—
242	Publishing	1.59	1.57	-0.02	0.80	0.79	-0.01
243	Recorded media mfg & publishing	2.28	2.19	-0.09	1.15	1.10	-0.05
251	Petroleum refining	1.99	2.30	0.31	1.00	1.16	0.16
253	Basic chemical mfg	0.71	0.68	-0.03	0.36	0.34	-0.02
254	Other chemical product mfg	9.41	9.33	-0.08	4.74	4.70	-0.04
255	Rubber product mfg	1.16	1.13	-0.03	0.59	0.57	-0.02
256	Plastic product mfg	1.62	1.58	-0.04	0.82	0.79	-0.03
271	Iron & steel mfg	0.20	0.19	-0.01	0.10	0.10	—
273	Non-ferrous basic metal product mfg	0.37	0.36	-0.01	0.18	0.18	—
276	Fabricated metal product mfg	2.08	2.03	-0.05	1.05	1.02	-0.03
281	Motor vehicle & part mfg	13.94	13.69	-0.25	24.54	24.14	-0.40	19.24	18.92	-0.32
282	Other transport equipment mfg	2.38	2.34	-0.04	6.14	5.99	-0.15	4.26	4.16	-0.10
283	Photographic & scientific equipment mfg	2.83	2.77	-0.06	5.61	5.51	-0.10	4.22	4.14	-0.08
284	Electronic equipment mfg	5.25	4.95	-0.30	21.10	19.53	-1.57	13.16	12.22	-0.94
285	Electrical equipment & household appliance mfg	4.29	4.15	-0.14	3.61	3.49	-0.12	3.96	3.83	-0.13
286	Industrial machinery & equipment mfg	25.33	24.53	-0.80	12.62	12.22	-0.40
29	Other mfg	8.63	8.19	-0.44	2.22	2.15	-0.07	5.45	5.20	-0.25
	Total	96.8	94.2	-2.6	88.5	85.3	-3.2	92.9	89.9	-3.0

.. not applicable

(a) Reference base of each index: 1998-99 = 100.0.

— nil or rounded to zero (including null cells)

STAGE OF PRODUCTION(a): Intermediate commodities index points change

ANZSIC		DOMESTIC			IMPORTS			TOTAL		
		Jun	Sep	Change	Jun	Sep	Change	Jun	Sep	Change
		Qtr	Qtr		Qtr	Qtr		Qtr		
		2003	2003		2003	2003		2003	2003	
012-013	Grain, sheep, beef & dairy cattle farming	6.99	6.76	-0.23	5.97	5.78	-0.19
011,014-016	Other agriculture	3.31	3.26	-0.05	2.83	2.77	-0.06
02	Services to agriculture; hunting & trapping	0.17	0.17	—	0.15	0.14	-0.01
04	Commercial fishing	0.25	0.25	—	0.22	0.22	—
110	Coal mining	0.66	0.61	-0.05	0.56	0.52	-0.04
120	Oil & gas extraction	1.57	1.50	-0.07	9.84	9.11	-0.73	2.77	2.60	-0.17
131	Metal ore mining	1.29	1.32	0.03	1.16	1.16	—	1.27	1.30	0.03
14	Other mining	1.03	1.04	0.01	0.34	0.33	-0.01	0.93	0.94	0.01
211	Meat & meat product mfg	1.97	1.87	-0.10	1.68	1.60	-0.08
212	Dairy product mfg	0.91	0.91	—	0.69	0.69	—	0.88	0.88	—
213-214	Fruit & vegetable processing; oil & fat mfg	0.24	0.24	—	0.62	0.63	0.01	0.30	0.30	—
215	Flour mill & cereal food mfg	0.84	0.84	—	0.72	0.72	—
216	Bakery product mfg	0.18	0.18	—	0.15	0.16	0.01
217	Other food mfg	1.06	1.01	-0.05	0.65	0.64	-0.01	1.00	0.95	-0.05
218	Beverage & malt mfg	0.71	0.73	0.02	0.75	0.73	-0.02	0.72	0.73	0.01
22	Textile, clothing, footwear & leather mfg	1.51	1.50	-0.01	7.84	7.59	-0.25	2.44	2.39	-0.05
231	Log sawmilling & timber dressing	0.88	0.89	0.01	1.73	1.68	-0.05	1.01	1.00	-0.01
232	Other wood product mfg	2.02	2.05	0.03	0.72	0.68	-0.04	1.83	1.85	0.02
233	Paper & paper product mfg	1.35	1.35	—	3.04	2.98	-0.06	1.59	1.59	—
241	Printing & services to printing	2.41	2.42	0.01	2.06	2.07	0.01
242	Publishing	2.77	2.83	0.06	2.37	2.42	0.05
251	Petroleum refining	2.75	2.72	-0.03	3.80	4.07	0.27	2.90	2.91	0.01
253	Basic chemical mfg	1.11	1.07	-0.04	6.82	6.60	-0.22	1.94	1.88	-0.06
254	Other chemical product mfg	1.99	1.98	-0.01	4.13	4.08	-0.05	2.30	2.28	-0.02
255	Rubber product mfg	0.55	0.55	—	2.61	2.57	-0.04	0.85	0.84	-0.01
256	Plastic product mfg	1.87	1.86	-0.01	3.70	3.59	-0.11	2.14	2.12	-0.02
26	Non-metallic mineral product mfg	4.19	4.22	0.03	3.03	2.93	-0.10	4.03	4.04	0.01
271	Iron & steel mfg	2.68	2.68	—	3.32	3.26	-0.06	2.78	2.76	-0.02
272	Basic non-ferrous metal mfg	1.45	1.46	0.01	0.59	0.59	—	1.32	1.33	0.01
273	Non-ferrous basic metal product mfg	0.31	0.30	-0.01	1.01	1.00	-0.01	0.41	0.40	-0.01
274	Structural metal product mfg	2.52	2.55	0.03	0.04	0.04	—	2.16	2.19	0.03
275	Sheet metal product mfg	1.15	1.15	—	0.16	0.15	-0.01	1.01	1.01	—
276	Fabricated metal product mfg	1.15	1.16	0.01	3.80	3.69	-0.11	1.54	1.52	-0.02
281	Motor vehicle & part mfg	2.13	2.13	—	11.72	10.78	-0.94	3.53	3.39	-0.14
282	Other transport equipment mfg	0.63	0.64	0.01	1.61	1.57	-0.04	0.78	0.77	-0.01
283	Photographic & scientific equipment mfg	0.24	0.24	—	4.48	4.37	-0.11	0.86	0.84	-0.02
284	Electronic equipment mfg	0.84	0.82	-0.02	7.61	7.11	-0.50	1.82	1.73	-0.09
285	Electrical equipment & household appliance mfg	1.73	1.72	-0.01	7.20	7.02	-0.18	2.52	2.49	-0.03
286	Industrial machinery & equipment mfg	1.39	1.39	—	11.36	11.04	-0.32	2.84	2.79	-0.05
29	Other mfg	2.55	2.45	-0.10	0.37	0.35	-0.02
36-37	Electricity, gas & water supply	4.68	4.79	0.11	3.99	4.09	0.10
571	Accommodation	0.52	0.53	0.01	0.45	0.45	—
611	Road freight transport	6.44	6.45	0.01	5.50	5.51	0.01
620	Rail transport	0.63	0.63	—	0.54	0.54	—
630	Water transport	0.59	0.57	-0.02	0.51	0.49	-0.02
640	Air & space transport	1.52	1.53	0.01	1.30	1.31	0.01
650	Other transport	0.25	0.25	—	0.21	0.21	—
66	Services to transport	1.62	1.63	0.01	1.39	1.40	0.01
670	Storage	0.98	0.98	—	0.84	0.84	—
771	Property operators & developers	10.05	10.06	0.01	8.59	8.60	0.01
772	Real estate agents	1.26	1.30	0.04	1.07	1.11	0.04
774	Machinery & equipment hiring & leasing	1.38	1.41	0.03	1.18	1.20	0.02
782	Technical services	1.96	2.04	0.08	1.68	1.74	0.06
783	Computer services	3.67	3.67	—	3.13	3.13	—
784	Legal & accounting services	5.17	5.29	0.12	4.41	4.52	0.11
785	Marketing & business management services	5.94	5.95	0.01	5.08	5.09	0.01
786	Other business services	6.77	6.88	0.11	5.78	5.87	0.09
	Total	114.3	114.4	0.1	106.9	103.1	-3.8	113.2	112.7	-0.5

.. not applicable

— nil or rounded to zero (including null cells)

(a) Reference base of each index: 1998-99 = 100.0.

STAGE OF PRODUCTION(a): Preliminary commodities index points change

ANZSIC		DOMESTIC			IMPORTS			TOTAL		
		Jun	Sep	Change	Jun	Sep	Change	Jun	Sep	Change
		Qtr	Qtr		Qtr	Qtr				
		2003	2003	2003	2003	2003	2003	2003	2003	
012-013	Grain, sheep, beef & dairy cattle farming	5.33	5.14	-0.19	4.59	4.43	-0.16
011,014-016	Other agriculture	2.26	2.23	-0.03	1.96	1.93	-0.03
02	Services to agriculture; hunting & trapping	0.32	0.29	-0.03	0.27	0.25	-0.02
030	Forestry & logging	0.34	0.34	—	0.29	0.30	0.01
110	Coal mining	1.26	1.18	-0.08	1.09	1.02	-0.07
120	Oil & gas extraction	3.01	2.87	-0.14	20.08	18.61	-1.47	5.36	5.04	-0.32
131	Metal ore mining	1.21	1.22	0.01	0.90	0.91	0.01	1.16	1.17	0.01
14	Other mining	1.47	1.47	—	0.49	0.47	-0.02	1.33	1.34	0.01
211	Meat & meat product mfg	0.75	0.72	-0.03	0.65	0.62	-0.03
212	Dairy product mfg	0.36	0.36	—	0.31	0.30	-0.01	0.35	0.35	—
213-214	Fruit & vegetable processing; oil & fat mfg	0.10	0.10	—	0.31	0.32	0.01	0.12	0.12	—
215	Flour mill & cereal food mfg	0.44	0.44	—	0.38	0.38	—
216	Bakery product mfg	0.06	0.06	—	0.05	0.06	0.01
217	Other food mfg	1.09	1.04	-0.05	0.45	0.45	—	1.00	0.96	-0.04
218	Beverage & malt mfg	0.39	0.40	0.01	0.48	0.46	-0.02	0.40	0.41	0.01
22	Textile, clothing, footwear & leather mfg	0.88	0.88	—	5.33	5.17	-0.16	1.49	1.46	-0.03
231	Log sawmilling & timber dressing	0.92	0.92	—	1.51	1.46	-0.05	1.00	1.00	—
232	Other wood product mfg	0.80	0.81	0.01	0.21	0.20	-0.01	0.72	0.73	0.01
233	Paper & paper product mfg	1.91	1.90	-0.01	7.77	7.61	-0.16	2.71	2.69	-0.02
241	Printing & services to printing	1.94	1.95	0.01	1.67	1.68	0.01
242	Publishing	2.33	2.38	0.05	2.01	2.05	0.04
251	Petroleum refining	3.01	2.98	-0.03	4.13	4.46	0.33	3.16	3.18	0.02
253	Basic chemical mfg	2.33	2.25	-0.08	14.29	13.84	-0.45	3.98	3.84	-0.14
254	Other chemical product mfg	2.13	2.12	-0.01	5.00	4.92	-0.08	2.53	2.51	-0.02
255	Rubber product mfg	0.45	0.45	—	2.27	2.23	-0.04	0.70	0.69	-0.01
256	Plastic product mfg	1.66	1.66	—	3.51	3.41	-0.10	1.92	1.90	-0.02
26	Non-metallic mineral product mfg	1.89	1.92	0.03	1.64	1.65	0.01
271	Iron & steel mfg	4.19	4.18	-0.01	5.24	5.14	-0.10	4.33	4.31	-0.02
272	Basic non-ferrous metal mfg	1.78	1.79	0.01	0.75	0.76	0.01	1.63	1.65	0.02
273	Non-ferrous basic metal product mfg	0.38	0.37	-0.01	1.25	1.25	—	0.50	0.49	-0.01
274	Structural metal product mfg	1.74	1.76	0.02	1.50	1.51	0.01
275	Sheet metal product mfg	0.57	0.58	0.01	0.08	0.08	—	0.51	0.51	—
276	Fabricated metal product mfg	0.87	0.87	—	2.93	2.85	-0.08	1.15	1.14	-0.01
281	Motor vehicle & part mfg	1.47	1.46	-0.01	7.94	7.30	-0.64	2.36	2.27	-0.09
282	Other transport equipment mfg	0.59	0.59	—	1.59	1.55	-0.04	0.73	0.72	-0.01
283	Photographic & scientific equipment mfg	0.10	0.10	—	2.56	2.49	-0.07	0.44	0.43	-0.01
284	Electronic equipment mfg	0.67	0.66	-0.01	6.53	6.10	-0.43	1.48	1.41	-0.07
285	Electrical equipment & household appliance mfg	1.01	1.00	-0.01	5.05	4.92	-0.13	1.57	1.54	-0.03
286	Industrial machinery & equipment mfg	1.21	1.21	—	11.11	10.80	-0.31	2.57	2.53	-0.04
36-37	Electricity, gas & water supply	5.72	5.87	0.15	4.93	5.05	0.12
571	Accommodation	0.61	0.62	0.01	0.53	0.53	—
611	Road freight transport	7.88	7.88	—	6.78	6.79	0.01
620	Rail transport	0.87	0.87	—	0.75	0.75	—
630	Water transport	0.66	0.64	-0.02	0.57	0.55	-0.02
640	Air & space transport	1.69	1.70	0.01	1.46	1.46	—
650	Other transport	0.34	0.34	—	0.29	0.29	—
66	Services to transport	1.93	1.94	0.01	1.65	1.67	0.02
670	Storage	1.19	1.20	0.01	1.03	1.03	—
771	Property operators & developers	14.07	14.09	0.02	12.11	12.13	0.02
772	Real estate agents	1.76	1.82	0.06	1.51	1.57	0.06
774	Machinery & equipment hiring & leasing	1.94	1.97	0.03	1.67	1.70	0.03
782	Technical services	2.09	2.17	0.08	1.80	1.87	0.07
783	Computer services	3.90	3.91	0.01	3.36	3.36	—
784	Legal & accounting services	4.79	4.90	0.11	4.12	4.22	0.10
785	Marketing & business management services	5.54	5.55	0.01	4.77	4.78	0.01
786	Other business services	6.52	6.62	0.10	5.62	5.70	0.08
	Total	114.7	114.7	—	112.1	108.1	-4.0	114.2	113.7	-0.5

.. not applicable

— nil or rounded to zero (including null cells)

(a) Reference base of each index: 1998-99 = 100.0.

ARTICLES PRODUCED BY MANUFACTURING INDUSTRIES (a): **Division index**

<i>Period</i>	<i>Index numbers</i>	<i>% change from previous period</i>	<i>% change from corresponding quarter of previous year</i>
1999–2000	120.6	4.3	..
2000–01	128.5	6.6	..
2001–02	128.8	0.2	..
2002–03	130.3	1.2	..
1998			
December	115.7	-0.6	-0.4
1999			
March	115.0	-0.6	-0.7
June	115.3	0.3	-0.8
September	117.7	2.1	1.1
December	119.3	1.4	3.1
2000			
March	121.4	1.8	5.6
June	123.8	2.0	7.4
September	126.2	1.9	7.2
December	129.3	2.5	8.4
2001			
March	127.7	-1.2	5.2
June	130.7	2.3	5.6
September	129.2	-1.1	2.4
December	128.4	-0.6	-0.7
2002			
March	128.3	-0.1	0.5
June	129.3	0.8	-1.1
September	129.0	-0.2	-0.2
December	130.5	1.2	1.6
2003			
March	132.1	1.2	3.0
June	129.5	-2.0	0.2
September	128.9	-0.5	-0.1

.. not applicable

(a) Reference base of each index: 1989–90 = 100.0.

ARTICLES PRODUCED BY MANUFACTURING INDUSTRIES (a): Subdivision & group

<i>Period</i>	<i>Food, beverages and tobacco (21)</i>	<i>Textiles and textile products (221-222)</i>	<i>Knitting mills, clothing, footwear and leather (223-226)</i>	<i>Log sawmilling and other wood products (231-232)</i>	<i>Paper and paper products (233)</i>	<i>Printing, publishing and recorded media (24)</i>	<i>Petroleum and coal products (251-252)</i>	<i>Chemicals (253-254)</i>	<i>Rubber and plastics (255-256)</i>
1999-2000	125.1	103.8	119.5	126.0	111.3	148.9	137.5	111.8	114.9
2000-01	131.4	108.6	120.7	130.7	114.9	152.4	190.2	115.8	119.1
2001-02	139.9	111.8	122.3	132.4	115.9	155.5	158.5	113.9	123.9
2002-03	139.9	120.3	124.8	135.1	117.9	155.2	172.6	115.1	124.5
1998									
December	122.8	102.9	117.4	121.2	110.3	144.0	85.1	111.8	113.9
1999									
March	122.7	102.8	118.2	121.3	110.6	143.6	79.7	111.0	114.0
June	121.4	102.4	119.0	120.7	110.6	143.7	92.2	109.3	114.1
September	122.7	102.3	119.3	122.2	112.0	148.3	119.3	109.8	114.0
December	124.9	102.1	119.4	123.5	110.8	148.7	125.6	110.5	114.1
2000									
March	125.2	103.9	119.8	127.9	110.9	148.8	145.0	112.2	115.7
June	127.4	106.7	119.6	130.5	111.5	149.8	160.2	114.5	115.9
September	127.2	106.4	119.1	131.3	113.1	151.5	190.5	114.0	116.2
December	129.3	108.0	120.6	131.9	115.3	152.1	207.0	116.1	118.4
2001									
March	132.0	109.4	121.2	130.1	115.5	152.4	174.5	116.1	120.0
June	136.9	110.5	121.9	129.5	115.6	153.6	188.8	116.8	121.6
September	137.6	110.3	121.7	130.5	115.9	155.7	170.4	115.4	122.9
December	140.6	109.3	122.0	132.0	115.2	155.1	155.4	113.7	123.9
2002									
March	141.8	112.8	122.6	133.7	115.3	155.3	144.8	113.2	124.5
June	139.4	114.9	122.8	133.4	117.0	155.7	163.5	113.3	124.3
September	138.2	115.0	124.2	133.9	117.6	156.1	161.9	114.7	125.3
December	139.5	123.4	124.8	134.0	119.5	154.6	173.2	115.1	125.4
2003									
March	141.3	124.1	124.5	134.9	117.0	155.7	189.4	115.0	122.7
June	140.6	118.5	125.5	137.4	117.6	154.2	165.8	115.7	124.7
September	138.8	117.7	124.8	138.2	118.1	156.1	163.7	114.3	124.8

(a) Reference base of each index: 1989-90 = 100.0.

<i>Period</i>	<i>Non-metallic mineral products (26)</i>	<i>Base metal products (271-273)</i>	<i>Fabricated metal products (274-276)</i>	<i>Transport equipment and parts (281-282)</i>	<i>Electronic equipment and other machinery (283-286)</i>	<i>Other manufacturing (29)</i>
1999-2000	117.5	104.8	115.2	119.6	109.9	123.9
2000-01	117.8	115.4	116.7	124.1	112.3	128.8
2001-02	118.7	107.9	118.6	128.5	114.2	131.0
2002-03	125.8	104.8	122.2	129.4	113.8	127.9
1998						
December	117.2	99.6	113.2	117.4	109.2	121.1
1999						
March	117.1	96.5	113.5	117.7	108.6	121.1
June	116.8	95.7	113.8	117.5	109.1	122.1
September	117.2	97.8	113.5	118.1	109.3	123.1
December	117.3	102.4	114.7	119.3	109.7	123.5
2000						
March	117.6	107.9	115.7	119.9	110.1	123.6
June	117.9	111.1	116.8	121.2	110.5	125.3
September	117.8	112.0	116.6	121.5	110.6	126.8
December	118.0	117.4	116.3	123.9	111.8	128.9
2001						
March	117.7	115.6	116.7	124.7	112.4	129.2
June	117.7	116.4	117.2	126.3	114.2	130.4
September	117.6	110.9	118.0	127.5	114.2	131.0
December	117.8	107.4	118.3	128.2	114.5	130.6
2002						
March	117.9	107.4	118.4	129.4	114.2	130.1
June	121.6	105.7	119.7	128.9	113.9	132.3
September	123.1	106.3	120.5	129.0	114.0	128.6
December	125.6	106.1	121.8	130.0	114.0	127.9
2003						
March	126.7	105.4	122.6	129.9	113.9	128.2
June	127.8	101.3	123.9	128.7	113.3	126.9
September	128.5	101.2	124.4	128.5	112.8	126.4

(a) Reference base of each index: 1989-90 = 100.0.

MATERIALS USED IN MANUFACTURING INDUSTRIES(a): Division index

<i>Period</i>	<i>Manufacturing division</i>	<i>Imported materials</i>	<i>Domestic materials</i>
1999–2000	115.8	118.8	114.5
2000–01	132.4	134.0	131.9
2001–02	132.4	130.3	134.1
2002–03	131.9	125.4	136.7
1998			
December	105.8	113.6	101.3
1999			
March	104.2	111.6	99.9
June	106.1	112.3	102.5
September	108.3	112.2	106.3
December	113.6	115.6	112.8
2000			
March	117.8	120.3	116.7
June	123.5	126.9	122.0
September	127.8	129.6	127.3
December	133.9	133.6	134.6
2001			
March	130.3	132.9	129.0
June	137.7	140.0	136.8
September	134.5	132.0	136.4
December	132.0	133.0	131.8
2002			
March	130.6	128.8	132.1
June	132.6	127.5	136.1
September	130.6	127.1	133.0
December	131.3	126.6	134.5
2003			
March	135.8	125.8	144.7
June	129.9	122.0	134.7
September	126.7	118.3	132.8

(a) Reference base of each index: 1989–90 = 100.0.

MATERIALS USED IN MANUFACTURING INDUSTRIES: Division percentage changes

Period *Manufacturing division* *Imported materials* *Domestic materials*

PERCENTAGE CHANGE FROM PREVIOUS YEAR

1999-2000	9.3	4.7	12.8
2000-01	14.3	12.8	15.2
2001-02	—	-2.8	1.7
2002-03	-0.4	-3.8	1.9

PERCENTAGE CHANGE FROM PREVIOUS QUARTER

1998			
December	-1.6	-2.6	-0.9
1999			
March	-1.5	-1.8	-1.4
June	1.8	0.6	2.6
September	2.1	-0.1	3.7
December	4.9	3.0	6.1
2000			
March	3.7	4.1	3.5
June	4.8	5.5	4.5
September	3.5	2.1	4.3
December	4.8	3.1	5.7
2001			
March	-2.7	-0.5	-4.2
June	5.7	5.3	6.0
September	-2.3	-5.7	-0.3
December	-1.9	0.8	-3.4
2002			
March	-1.1	-3.2	0.2
June	1.5	-1.0	3.0
September	-1.5	-0.3	-2.3
December	0.5	-0.4	1.1
2003			
March	3.4	-0.6	7.6
June	-4.3	-3.0	-6.9
September	-2.5	-3.0	-1.4

PERCENTAGE CHANGE FROM CORRESPONDING QUARTER
OF PREVIOUS YEAR

1998			
December	-2.2	1.5	-4.7
1999			
March	-1.9	-0.8	-2.6
June	-0.9	-2.0	-0.2
September	0.7	-3.8	4.0
December	7.4	1.8	11.4
2000			
March	13.1	7.8	16.8
June	16.4	13.0	19.0
September	18.0	15.5	19.8
December	17.9	15.6	19.3
2001			
March	10.6	10.5	10.5
June	11.5	10.3	12.1
September	5.2	1.9	7.1
December	-1.4	-0.4	-2.1
2002			
March	0.2	-3.1	2.4
June	-3.7	-8.9	-0.5
September	-2.9	-3.7	-2.5
December	-0.5	-4.8	2.0
2003			
March	4.0	-2.3	9.5
June	-2.0	-4.3	-1.0
September	-3.0	-6.9	-0.2

— nil or rounded to zero (including null cells)

MATERIALS USED IN MANUFACTURING INDUSTRIES(a): Subdivision & group

<i>Period</i>	<i>Food, beverages and tobacco (21)</i>	<i>Textiles and textile products (221,222)</i>	<i>Knitting mills and clothing (223,224)</i>	<i>Footwear (225)</i>	<i>Leather and leather products (226)</i>	<i>Sawmilling and timber products (231,232)</i>	<i>Paper and paper products (233)</i>	<i>Printing and publishing (24)</i>	<i>Petroleum and coal products (251,252)</i>
1999-2000	110.8	91.6	102.6	107.4	97.8	123.0	99.8	107.7	157.8
2000-01	121.0	102.3	106.5	120.3	107.2	132.8	110.0	116.5	217.7
2001-02	137.8	106.9	109.2	130.3	102.7	136.1	109.7	119.3	175.9
2002-03	136.0	110.3	107.6	130.6	100.3	130.0	104.8	116.9	188.3
1998									
December	109.6	94.0	107.7	110.9	96.3	120.8	97.3	108.2	94.9
1999									
March	111.5	93.0	106.3	110.5	93.9	117.9	96.2	107.8	84.6
June	110.2	91.4	104.0	107.9	89.9	118.2	94.1	107.3	102.8
September	108.7	89.1	102.5	101.5	89.0	119.1	94.2	107.4	126.9
December	110.8	89.2	101.5	105.2	96.4	121.9	98.2	106.7	148.0
2000									
March	111.6	91.3	102.8	111.1	101.3	123.4	101.0	106.9	164.5
June	112.2	96.8	103.7	111.7	104.3	127.7	105.6	109.6	191.6
September	116.8	98.7	102.9	112.1	103.4	129.0	107.1	112.2	205.9
December	118.3	100.7	107.0	120.1	106.9	131.7	110.3	116.7	240.5
2001									
March	120.8	102.9	106.3	122.6	108.4	133.1	111.0	117.9	204.3
June	128.0	106.7	109.7	126.3	109.9	137.4	111.6	119.2	220.1
September	135.7	105.2	109.5	127.8	102.1	136.5	110.1	118.6	197.7
December	138.8	104.2	110.5	132.0	107.1	137.1	111.5	118.8	168.8
2002									
March	139.9	108.8	109.1	129.3	98.7	135.7	109.4	120.1	156.8
June	136.7	109.3	107.6	131.9	103.0	135.2	107.8	119.8	180.4
September	128.6	109.1	108.2	130.3	99.7	131.5	106.4	118.8	189.0
December	135.8	112.1	108.3	130.1	103.9	130.1	104.5	116.9	184.5
2003									
March	140.2	111.8	107.7	130.8	99.2	129.9	102.9	116.9	207.9
June	139.5	108.2	106.2	131.1	98.2	128.3	105.5	115.1	171.9
September	137.0	105.4	105.6	125.4	88.4	127.2	105.5	111.6	160.2

(a) Reference base of each index: 1989-90 = 100.0.

<i>Period</i>	<i>Chemicals (253,254)</i>	<i>Rubber and plastics (255,256)</i>	<i>Non- metallic mineral products (26)</i>	<i>Basic metal products (271-273)</i>	<i>Fabricated metal products (274-276)</i>	<i>Transport equipment and parts (281,282)</i>	<i>Electronic equipment and other machinery (283-286)</i>	<i>Other manufacturing (29)</i>
1999-2000	114.0	110.8	110.7	92.5	106.1	120.5	103.4	118.8
2000-01	126.3	123.9	111.5	101.7	111.7	125.2	108.0	125.6
2001-02	121.0	121.6	115.4	106.0	110.6	124.6	107.2	124.4
2002-03	118.3	123.5	123.1	104.6	111.0	124.8	107.5	124.0
1998								
December	111.4	111.1	111.7	92.8	107.8	116.3	104.4	115.3
1999								
March	109.4	109.6	111.1	90.3	105.3	116.6	103.2	114.5
June	108.8	106.3	110.3	88.6	103.5	117.2	102.0	114.1
September	107.9	106.4	110.6	86.4	104.6	118.1	102.1	115.1
December	112.3	108.1	110.9	92.1	106.1	120.5	102.3	117.6
2000								
March	114.2	112.2	110.7	94.7	106.0	120.4	103.6	119.9
June	121.5	116.4	110.7	96.7	107.8	122.9	105.6	122.4
September	122.5	119.6	111.1	97.6	109.7	123.1	106.1	123.4
December	124.8	122.4	110.8	102.3	111.9	125.3	107.9	126.3
2001								
March	126.9	125.4	111.5	101.7	112.0	125.2	108.1	125.7
June	130.8	128.2	112.5	105.2	113.1	127.2	109.8	126.9
September	122.3	124.8	112.1	106.0	111.3	124.6	107.3	125.2
December	123.4	122.9	112.7	105.3	110.3	125.0	107.3	125.5
2002								
March	120.0	120.5	117.5	106.4	110.7	124.5	107.1	123.5
June	118.4	118.3	119.4	106.4	109.9	124.2	106.9	123.3
September	119.3	122.3	119.8	105.8	110.4	124.9	107.5	124.3
December	118.6	123.4	122.7	104.8	110.5	125.4	107.4	124.2
2003								
March	117.9	122.8	123.2	106.0	112.0	125.3	107.9	124.3
June	117.3	125.6	126.7	101.8	111.1	123.5	107.1	123.1
September	116.8	118.7	127.6	101.3	111.9	121.6	106.5	121.2

(a) Reference base of each index: 1989-90 = 100.0.

OUTPUT OF THE GENERAL CONSTRUCTION INDUSTRY(a), Subdivision index

<i>Period</i>	<i>Index numbers</i>	<i>% change from previous period</i>	<i>% change from corresponding quarter of previous year</i>
1999–2000	104.9	4.9	..
2000–01	106.1	1.2	..
2001–02	107.9	1.7	..
2002–03	112.7	4.4	..
1998			
December	99.4	0.7	2.8
1999			
March	100.5	1.1	3.2
June	101.4	0.9	3.5
September	102.7	1.3	4.1
December	104.6	1.9	5.2
2000			
March	105.8	1.1	5.3
June	106.4	0.6	4.9
September	106.2	-0.2	3.4
December	106.3	0.1	1.6
2001			
March	106.2	-0.1	0.4
June	105.8	-0.4	-0.6
September	106.7	0.9	0.5
December	107.3	0.6	0.9
2002			
March	108.2	0.8	1.9
June	109.5	1.2	3.5
September	110.5	0.9	3.6
December	111.4	0.8	3.8
2003			
March	113.0	1.4	4.4
June	115.8	2.5	5.8
September	117.9	1.8	6.7

.. not applicable

(a) Reference base of each index: 1998–99 = 100.0.

<i>Period</i>	<i>Building construction (411)</i>	<i>House construction (4111)</i>	<i>Residential building construction n.e.c. (4112)</i>	<i>Non- residential building construction (4113)</i>	<i>Non- building construction (412)</i>	<i>Road and bridge construction (4121)</i>
1999–2000	105.0	107.2	104.7	103.3	103.7	103.7
2000–01	106.0	109.1	104.2	103.9	107.9	107.9
2001–02	107.8	112.0	105.1	105.1	109.7	109.7
2002–03	112.4	116.5	110.4	109.6	116.0	116.0
1998						
December	99.4	99.2	99.3	99.6	99.8	99.8
1999						
March	100.6	100.7	100.6	100.4	99.9	99.9
June	101.5	101.7	101.5	101.3	100.7	100.7
September	102.8	103.7	102.8	102.1	101.8	101.8
December	104.8	107.1	104.5	103.1	103.1	103.1
2000						
March	105.9	108.8	105.2	103.7	104.4	104.4
June	106.5	109.3	106.1	104.3	105.5	105.5
September	106.1	108.6	105.2	104.2	107.1	107.1
December	106.2	109.0	104.8	104.3	107.8	107.8
2001						
March	106.0	109.3	103.9	104.0	108.3	108.3
June	105.6	109.6	103.0	103.2	108.2	108.2
September	106.5	110.6	103.8	104.0	109.1	109.1
December	107.2	111.8	104.3	104.4	107.9	107.9
2002						
March	108.1	112.3	105.6	105.5	109.5	109.5
June	109.2	113.4	106.8	106.5	112.1	112.1
September	110.2	114.3	108.2	107.6	113.6	113.6
December	111.0	115.2	108.8	108.1	115.3	115.3
2003						
March	112.7	117.0	110.4	109.8	116.8	116.8
June	115.5	119.3	114.1	112.8	118.4	118.4
September	117.8	121.4	116.5	115.2	119.3	119.3

(a) Reference base of each index: 1998–99 = 100.0.

MATERIALS USED IN HOUSE BUILDING(a): Index numbers

<i>Period</i>	<i>Weighted average of six State capital cities</i>	<i>Sydney</i>	<i>Melbourne</i>	<i>Brisbane</i>	<i>Adelaide</i>	<i>Perth</i>	<i>Hobart</i>
1999–2000	122.8	126.8	121.7	120.8	127.2	117.7	123.8
2000–01	124.4	130.0	123.1	120.6	129.6	118.8	126.0
2001–02	126.0	132.0	125.0	122.0	130.6	119.4	128.4
2002–03	130.5	137.2	128.4	127.6	135.7	123.0	133.7
1998							
December	119.7	121.8	118.1	118.6	125.2	116.3	122.3
1999							
March	119.5	122.0	117.7	118.4	125.1	116.0	122.1
June	119.2	121.8	117.4	117.5	125.2	115.9	121.9
September	120.5	123.7	119.2	118.3	125.5	116.9	122.1
December	121.5	124.4	120.5	119.9	126.0	117.1	122.6
2000							
March	123.8	128.0	122.9	122.1	127.5	118.1	124.6
June	125.5	131.2	124.2	122.9	129.7	118.7	126.0
September	124.5	130.0	123.2	121.2	129.8	118.3	125.2
December	124.4	129.8	123.4	120.6	129.7	119.0	125.6
2001							
March	124.2	129.8	122.8	120.4	129.4	118.9	126.3
June	124.4	130.2	123.1	120.2	129.5	119.1	127.0
September	124.7	130.5	124.3	120.2	128.4	118.9	127.3
December	125.2	131.4	124.4	120.7	130.1	118.9	127.6
2002							
March	126.1	132.2	124.7	122.9	130.9	119.0	128.6
June	127.8	134.0	126.4	124.3	133.1	120.9	129.9
September	128.8	134.7	127.0	126.1	134.5	121.8	131.6
December	130.1	136.7	128.1	127.2	135.2	122.8	132.6
2003							
March	130.9	138.0	128.7	127.5	136.2	123.4	134.6
June	132.1	139.5	129.6	129.6	136.8	123.9	135.8
September	132.9	140.7	130.1	130.6	137.4	124.6	136.8

(a) Reference base of each index: 1989–90 = 100.0.

MATERIALS USED IN HOUSE BUILDING: Percentage change

<i>Period</i>	<i>Weighted average of six State capital cities</i>	<i>Sydney</i>	<i>Melbourne</i>	<i>Brisbane</i>	<i>Adelaide</i>	<i>Perth</i>	<i>Hobart</i>
PERCENTAGE CHANGE FROM PREVIOUS YEAR							
1999-2000	2.8	4.3	3.1	2.2	1.8	1.4	1.3
2000-01	1.3	2.5	1.2	-0.2	1.9	0.9	1.8
2001-02	1.3	1.5	1.5	1.2	0.8	0.5	1.9
2002-03	3.6	3.9	2.7	4.6	3.9	3.0	4.1

<i>Period</i>	<i>Weighted average of six State capital cities</i>	<i>Sydney</i>	<i>Melbourne</i>	<i>Brisbane</i>	<i>Adelaide</i>	<i>Perth</i>	<i>Hobart</i>
PERCENTAGE CHANGE FROM PREVIOUS QUARTER							
1998							
December	0.3	0.8	-0.4	0.2	0.6	0.2	-0.2
1999							
March	-0.2	0.2	-0.3	-0.2	-0.1	-0.3	-0.2
June	-0.3	-0.2	-0.3	-0.8	0.1	-0.1	-0.2
September	1.1	1.6	1.5	0.7	0.2	0.9	0.2
December	0.8	0.6	1.1	1.4	0.4	0.2	0.4
2000							
March	1.9	2.9	2.0	1.8	1.2	0.9	1.6
June	1.4	2.5	1.1	0.7	1.7	0.5	1.1
September	-0.8	-0.9	-0.8	-1.4	0.1	-0.3	-0.6
December	-0.1	-0.2	0.2	-0.5	-0.1	0.6	0.3
2001							
March	-0.2	—	-0.5	-0.2	-0.2	-0.1	0.6
June	0.2	0.3	0.2	-0.2	0.1	0.2	0.6
September	0.2	0.2	1.0	—	-0.8	-0.2	0.2
December	0.4	0.7	0.1	0.4	1.3	—	0.2
2002							
March	0.7	0.6	0.2	1.8	0.6	0.1	0.8
June	1.3	1.4	1.4	1.1	1.7	1.6	1.0
September	0.8	0.5	0.5	1.4	1.1	0.7	1.3
December	1.0	1.5	0.9	0.9	0.5	0.8	0.8
2003							
March	0.6	1.0	0.5	0.2	0.7	0.5	1.5
June	0.9	1.1	0.7	1.6	0.4	0.4	0.9
September	0.6	0.9	0.4	0.8	0.4	0.6	0.7

<i>Period</i>	<i>Weighted average of six State capital cities</i>	<i>Sydney</i>	<i>Melbourne</i>	<i>Brisbane</i>	<i>Adelaide</i>	<i>Perth</i>	<i>Hobart</i>
PERCENTAGE CHANGE FROM CORRESPONDING QUARTER OF PREVIOUS YEAR							
1998							
December	1.5	2.0	1.3	1.6	1.9	0.4	1.4
1999							
March	0.7	1.0	0.1	1.2	1.1	0.3	0.7
June	0.2	0.9	-0.5	-0.3	0.9	—	-0.1
September	0.9	2.4	0.5	-0.1	0.9	0.7	-0.3
December	1.5	2.1	2.0	1.1	0.6	0.7	0.2
2000							
March	3.6	4.9	4.4	3.1	1.9	1.8	2.0
June	5.3	7.7	5.8	4.6	3.6	2.4	3.4
September	3.3	5.1	3.4	2.5	3.4	1.2	2.5
December	2.4	4.3	2.4	0.6	2.9	1.6	2.4
2001							
March	0.3	1.4	-0.1	-1.4	1.5	0.7	1.4
June	-0.9	-0.8	-0.9	-2.2	-0.2	0.3	0.8
September	0.2	0.4	0.9	-0.8	-1.1	0.5	1.7
December	0.6	1.2	0.8	0.1	0.3	-0.1	1.6
2002							
March	1.5	1.8	1.5	2.1	1.2	0.1	1.8
June	2.7	2.9	2.7	3.4	2.8	1.5	2.3
September	3.3	3.2	2.2	4.9	4.8	2.4	3.4
December	3.9	4.0	3.0	5.4	3.9	3.3	3.9
2003							
March	3.8	4.4	3.2	3.7	4.0	3.7	4.7
June	3.4	4.1	2.5	4.3	2.8	2.5	4.5
September	3.2	4.5	2.4	3.6	2.2	2.3	4.0

— nil or rounded to zero (including null cells)

<i>Period</i>	<i>Weighted average of six State capital cities</i>	<i>Sydney</i>	<i>Melbourne</i>	<i>Brisbane</i>	<i>Adelaide</i>	<i>Perth</i>	<i>Hobart</i>
1999–2000	116.1	116.0	114.4	119.3	116.1	115.4	119.0
2000–01	116.4	116.1	115.4	119.1	116.8	115.6	119.3
2001–02	118.6	118.2	117.8	120.8	118.8	117.7	121.3
2002–03	123.6	123.0	122.7	126.9	123.5	122.8	124.2
1998							
December	115.2	115.1	113.2	118.7	115.6	114.2	118.6
1999							
March	115.2	115.2	113.3	118.6	115.6	113.9	118.5
June	115.4	115.4	113.7	118.6	115.6	114.1	118.3
September	115.2	115.1	113.4	118.9	115.2	114.4	118.5
December	115.4	115.3	113.8	118.9	115.4	115.0	118.4
2000							
March	116.4	116.4	114.5	119.5	116.3	115.8	119.2
June	117.4	117.3	116.0	120.0	117.6	116.5	119.7
September	115.5	115.4	114.0	118.7	116.0	114.0	117.9
December	116.3	115.7	115.3	119.1	116.8	115.6	119.1
2001							
March	116.7	116.4	115.7	119.2	116.8	116.0	120.2
June	117.2	116.7	116.4	119.3	117.4	116.8	120.1
September	117.5	117.1	116.8	120.0	117.2	116.6	120.3
December	118.1	117.7	117.3	120.1	118.3	117.3	120.5
2002							
March	118.4	117.9	117.6	120.7	119.0	117.3	121.6
June	120.3	120.0	119.3	122.5	120.7	119.7	122.8
September	121.6	121.0	120.8	125.1	121.8	120.3	123.5
December	122.8	122.1	121.8	126.1	123.3	122.4	123.7
2003							
March	124.1	123.5	123.4	127.4	123.8	123.6	124.2
June	125.7	125.3	124.8	128.8	125.1	125.0	125.4
September	126.3	126.0	125.2	129.3	125.6	125.6	126.0

(a) Reference base of each index: 1989–90 = 100.0.

<i>Period</i>	<i>Weighted average of six State capital cities</i>	<i>Sydney</i>	<i>Melbourne</i>	<i>Brisbane</i>	<i>Adelaide</i>	<i>Perth</i>	<i>Hobart</i>
PERCENTAGE CHANGE FROM PREVIOUS YEAR							
1999-2000	0.8	0.7	1.1	0.8	0.5	1.1	0.4
2000-01	0.3	0.1	0.9	-0.2	0.6	0.2	0.3
2001-02	1.9	1.8	2.1	1.4	1.7	1.8	1.7
2002-03	4.2	4.1	4.2	5.0	4.0	4.3	2.4

PERCENTAGE CHANGE FROM PREVIOUS QUARTER							
1998							
December	0.3	0.1	0.7	0.8	0.3	—	0.2
1999							
March	—	0.1	0.1	-0.1	—	-0.3	-0.1
June	0.2	0.2	0.4	—	—	0.2	-0.2
September	-0.2	-0.3	-0.3	0.3	-0.3	0.3	0.2
December	0.2	0.2	0.4	—	0.2	0.5	-0.1
2000							
March	0.9	1.0	0.6	0.5	0.8	0.7	0.7
June	0.9	0.8	1.3	0.4	1.1	0.6	0.4
September	-1.6	-1.6	-1.7	-1.1	-1.4	-2.1	-1.5
December	0.7	0.3	1.1	0.3	0.7	1.4	1.0
2001							
March	0.3	0.6	0.3	0.1	—	0.3	0.9
June	0.4	0.3	0.6	0.1	0.5	0.7	-0.1
September	0.3	0.3	0.3	0.6	-0.2	-0.2	0.2
December	0.5	0.5	0.4	0.1	0.9	0.6	0.2
2002							
March	0.3	0.2	0.3	0.5	0.6	—	0.9
June	1.6	1.8	1.4	1.5	1.4	2.0	1.0
September	1.1	0.8	1.3	2.1	0.9	0.5	0.6
December	1.0	0.9	0.8	0.8	1.2	1.7	0.2
2003							
March	1.1	1.1	1.3	1.0	0.4	1.0	0.4
June	1.3	1.5	1.1	1.1	1.1	1.1	1.0
September	0.5	0.6	0.3	0.4	0.4	0.5	0.5

PERCENTAGE CHANGE FROM CORRESPONDING QUARTER OF PREVIOUS YEAR							
1998							
December	1.1	0.8	1.7	1.5	0.4	-0.5	1.2
1999							
March	1.0	0.7	1.7	1.4	0.5	-0.3	0.7
June	0.8	0.5	1.7	1.1	—	-0.1	0.2
September	0.3	0.1	0.9	0.9	-0.1	0.2	0.1
December	0.2	0.2	0.5	0.2	-0.2	0.7	-0.2
2000							
March	1.0	1.0	1.1	0.8	0.6	1.7	0.6
June	1.7	1.6	2.0	1.2	1.7	2.1	1.2
September	0.3	0.3	0.5	-0.2	0.7	-0.3	-0.5
December	0.8	0.3	1.3	0.2	1.2	0.5	0.6
2001							
March	0.3	—	1.0	-0.3	0.4	0.2	0.8
June	-0.2	-0.5	0.3	-0.6	-0.2	0.3	0.3
September	1.7	1.5	2.5	1.1	1.0	2.3	2.0
December	1.5	1.7	1.7	0.8	1.3	1.5	1.2
2002							
March	1.5	1.3	1.6	1.3	1.9	1.1	1.2
June	2.6	2.8	2.5	2.7	2.8	2.5	2.2
September	3.5	3.3	3.4	4.3	3.9	3.2	2.7
December	4.0	3.7	3.8	5.0	4.2	4.3	2.7
2003							
March	4.8	4.7	4.9	5.6	4.0	5.4	2.1
June	4.5	4.4	4.6	5.1	3.6	4.4	2.1
September	3.9	4.1	3.6	3.4	3.1	4.4	2.0

— nil or rounded to zero (including null cells)

Period	OPEN CUT MINING			UNDERGROUND MINING		
	Index numbers	% change from previous period	% change from corresponding quarter of previous year	Index numbers	% change from previous period	% change from corresponding quarter of previous year
1999–2000	122.2	8.0	..	118.3	-0.4	..
2000–01	128.9	5.5	..	122.9	3.9	..
2001–02	129.6	0.5	..	127.5	3.7	..
2002–03	134.3	3.6	..	129.9	1.9	..
1998						
December	113.1	-0.2	-2.3	118.7	-0.3	1.6
1999						
March	112.3	-0.7	-3.6	118.7	—	1.2
June	114.0	1.5	2.1	118.6	-0.1	1.3
September	114.8	0.7	1.3	117.4	-1.0	-1.3
December	120.8	5.2	6.8	117.5	0.1	-1.0
2000						
March	124.9	3.4	11.2	118.3	0.7	-0.3
June	128.3	2.7	12.5	119.9	1.4	1.1
September	125.7	-2.0	9.5	119.8	-0.1	2.0
December	132.5	5.4	9.7	121.1	1.1	3.1
2001						
March	126.8	-4.3	1.5	123.5	2.0	4.4
June	130.4	2.8	1.6	127.2	3.0	6.1
September	131.4	0.8	4.5	127.4	0.2	6.3
December	130.3	-0.8	-1.7	128.5	0.9	6.1
2002						
March	127.4	-2.2	0.5	127.8	-0.5	3.5
June	129.1	1.3	-1.0	126.3	-1.2	-0.7
September	133.4	3.3	1.5	130.4	3.2	2.4
December	134.9	1.1	3.5	129.6	-0.6	0.9
2003						
March	134.4	-0.4	5.5	129.3	-0.2	1.2
June	134.3	-0.1	4.0	130.1	0.6	3.0
September	129.5	-3.6	-2.9	130.3	0.2	-0.1

.. not applicable

— nil or rounded to zero (including null cells)

(a) Reference base of each index: 1989–90 = 100.0.

<i>Period</i>	<i>Index numbers</i>	<i>% change from previous period</i>	<i>% change from corresponding quarter of previous year</i>
1999–2000	100.2	0.2	..
2000–01	102.3	2.1	..
2001–02	103.2	0.9	..
2002–03	105.2	1.9	..
1998			
December	100.0	-0.1	na
1999			
March	100.3	0.3	na
June	99.6	-0.7	na
September	99.5	-0.1	-0.6
December	99.5	—	-0.5
2000			
March	100.4	0.9	0.1
June	101.2	0.8	1.6
September	101.2	—	1.7
December	102.1	0.9	2.6
2001			
March	102.8	0.7	2.4
June	103.2	0.4	2.0
September	103.2	—	2.0
December	103.3	0.1	1.2
2002			
March	103.0	-0.3	0.2
June	103.3	0.3	0.1
September	103.5	0.2	0.3
December	104.9	1.4	1.5
2003			
March	105.9	1.0	2.8
June	106.3	0.4	2.9
September	106.1	-0.2	2.5

.. not applicable

na not available

— nil or rounded to zero (including null cells)

(a) Reference base of each index: 1998–99 = 100.0.

<i>Period</i>	<i>Road transport</i> (61)	<i>Rail transport</i> (62)	<i>Water transport</i> (63)	<i>Air and space</i> <i>transport</i> (64)	<i>Other transport</i> (65)	<i>Services to</i> <i>transport</i> (66)	<i>Storage</i> (67)
1999–2000	101.0	94.4	103.8	99.1	na	97.2	100.9
2000–01	103.1	95.3	109.8	102.7	101.8	97.2	102.1
2001–02	105.0	94.9	109.4	103.5	102.9	97.0	102.2
2002–03	107.3	94.8	106.3	111.4	103.4	100.2	103.3
1998							
December	99.7	99.8	100.4	100.2	na	100.3	100.3
1999							
March	100.5	99.5	99.4	102.3	na	99.7	100.1
June	100.4	97.4	98.3	98.3	na	99.9	100.1
September	100.5	95.9	99.7	98.2	na	97.2	100.3
December	100.7	93.6	102.1	96.7	na	97.2	100.4
2000							
March	100.9	94.2	104.7	100.5	na	97.2	101.3
June	101.8	93.9	108.6	101.1	na	97.0	101.7
September	101.6	93.7	108.8	101.8	101.2	97.2	101.8
December	102.7	95.7	108.8	103.3	101.2	97.5	101.7
2001							
March	103.8	95.7	110.3	102.9	102.4	97.1	102.4
June	104.2	96.2	111.4	102.8	102.5	96.9	102.5
September	104.5	95.2	111.1	103.2	102.6	96.8	102.7
December	104.8	96.1	109.5	103.1	102.6	97.0	102.6
2002							
March	105.2	94.1	108.2	103.3	103.2	97.0	101.5
June	105.3	94.0	108.6	104.4	103.3	97.3	102.1
September	105.4	94.7	106.7	104.5	101.3	100.2	102.2
December	106.6	93.6	107.2	113.8	101.3	100.6	102.3
2003							
March	108.1	95.6	106.7	113.2	105.2	99.8	104.4
June	109.2	95.4	104.6	114.2	105.9	100.0	104.4
September	109.2	94.8	101.0	114.7	105.9	100.8	104.6

na not available

(a) Reference base of each index: 1998–99 = 100.0.

<i>Period</i>	<i>Index numbers</i>	<i>% change from previous period</i>	<i>% change from corresponding quarter of previous year</i>
1999–2000	103.6	3.6	..
2000–01	107.5	3.8	..
2001–02	110.6	2.9	..
2002–03	113.5	2.6	..
1998			
December	99.7	0.8	na
1999			
March	100.1	0.4	na
June	101.3	1.2	na
September	102.3	1.0	3.4
December	103.3	1.0	3.6
2000			
March	104.0	0.7	3.9
June	104.7	0.7	3.4
September	106.0	1.2	3.6
December	107.3	1.2	3.9
2001			
March	108.2	0.8	4.0
June	108.6	0.4	3.7
September	109.7	1.0	3.5
December	110.3	0.5	2.8
2002			
March	110.9	0.5	2.5
June	111.4	0.5	2.6
September	112.3	0.8	2.4
December	113.1	0.7	2.5
2003			
March	114.0	0.8	2.8
June	114.5	0.4	2.8
September	115.9	1.2	3.2

.. not applicable

na not available

(a) Reference base of each index: 1998–99 = 100.0.

<i>Period</i>	<i>Property services (77)</i>	<i>Property operators and developers (771)</i>	<i>Real estate agents (772)</i>	<i>Machinery equipment hiring and leasing (774)</i>	<i>Business services (78)</i>	<i>Scientific research (781)</i>	<i>Technical services (782)</i>	<i>Computer services (783)</i>
1999-2000	103.2	102.8	109.9	101.3	103.8	102.7	102.2	108.0
2000-01	108.7	109.0	121.6	100.9	106.9	104.7	103.6	111.2
2001-02	111.5	111.8	133.9	98.8	110.1	107.0	106.7	112.6
2002-03	113.3	111.2	149.7	100.0	113.6	113.5	113.4	114.7
1998								
December	100.3	100.5	99.5	99.8	99.4	98.4	100.2	97.8
1999								
March	100.4	100.3	100.5	100.4	99.9	101.3	99.2	99.1
June	100.7	100.6	102.1	100.4	101.7	102.0	100.3	106.1
September	101.6	101.3	105.2	101.1	102.7	102.3	101.6	106.4
December	102.6	102.2	108.2	101.4	103.7	102.3	102.0	108.2
2000								
March	103.4	103.0	111.3	101.2	104.3	103.0	102.2	108.6
June	105.0	104.6	115.0	101.4	104.6	103.0	102.9	108.7
September	106.6	106.3	118.9	101.4	105.7	103.5	103.0	109.2
December	108.5	108.7	120.5	101.6	106.6	104.8	103.3	110.6
2001								
March	109.6	110.3	122.5	100.4	107.4	105.1	103.9	112.2
June	110.1	110.8	124.5	100.0	107.7	105.2	104.2	112.7
September	110.9	111.7	128.1	99.3	109.0	106.7	105.6	112.3
December	111.2	111.8	132.7	98.3	109.8	106.9	106.2	112.6
2002								
March	111.6	111.8	135.7	98.6	110.5	107.0	107.1	112.9
June	112.1	111.8	139.1	98.8	110.9	107.2	107.8	112.6
September	112.3	111.1	143.8	98.7	112.3	112.4	112.1	113.2
December	112.9	111.1	147.4	100.1	113.2	112.8	112.9	115.1
2003								
March	113.9	111.6	151.9	100.3	114.0	113.8	113.5	115.2
June	114.1	111.0	155.5	100.7	114.8	115.0	114.9	115.4
September	115.3	111.2	161.5	102.4	116.3	115.1	118.9	115.4

(a) Reference base of each index: 1998-99 = 100.0.

<i>Period</i>	<i>Legal and accounting services (784)</i>	<i>Marketing and business management services (785)</i>	<i>Other business services (786)</i>
1999–2000	103.1	104.7	102.1
2000–01	107.7	109.5	103.7
2001–02	113.2	114.4	105.7
2002–03	117.7	117.0	108.9
1998			
December	99.8	99.5	99.7
1999			
March	100.2	100.5	100.2
June	100.3	101.3	100.5
September	102.0	103.0	101.3
December	102.3	104.5	102.2
2000			
March	103.3	105.3	102.8
June	104.7	106.0	102.0
September	106.6	107.9	103.2
December	107.4	108.7	103.9
2001			
March	108.2	110.3	103.8
June	108.7	110.9	104.0
September	111.9	112.1	105.1
December	112.6	114.2	105.4
2002			
March	113.4	115.4	105.9
June	114.9	115.8	106.2
September	116.8	115.2	107.8
December	117.4	116.0	108.4
2003			
March	117.9	117.8	109.3
June	118.5	119.0	110.2
September	121.5	119.3	111.9

(a) Reference base of each index: 1998–99 = 100.0.

EXPLANATORY NOTES

INTRODUCTION

1 This publication contains a range of producer price indexes. Economy-wide indexes are presented within a stage of production framework, followed by a set of indexes relating to specific industries (selected manufacturing, construction, mining and service industries).

2 Index numbers for the recently established producer price indexes, i.e. stage of production and the service industry and construction industry output indexes, are calculated on the reference base 1998–99=100.0. The index numbers for the other, longer established producer price indexes are calculated on the reference base 1989–90=100.0.

GENERAL

Output and input indexes

3 Producer price indexes can be constructed as either output measures or input measures. Output indexes measure changes in the prices of sales by a defined sector of the economy while input indexes measure changes in the prices of purchases by a particular economic sector.

Valuation basis

4 The valuation basis for the transactions covered by an output index is basic prices, defined as the amount received by the producer exclusive of any taxes on products and transport and trade margins (i.e. the pricing point is ex-factory, ex-farm, ex-service provider, etc.).

5 On the other hand, an input index has a valuation basis of purchasers' prices, defined as the amount paid by the purchaser inclusive of any non-deductible taxes on products and transport and trade margins (i.e. the prices recorded in the index should be those relating to delivered into store, delivered on site, etc.).

6 In reality, industry practice may mean that it is sometimes necessary to diverge from the conceptual ideal in order to obtain actual transaction prices. For example, although the pricing point for the output index Price Indexes of Articles Produced by Manufacturing Industries is ex-factory, in cases where costs such as handling and distribution are built into the manufacturer's selling price, they will be included in the index.

7 Similarly, for input indexes such as the Price Index of Materials Used In House Building, which has a pricing point of delivered on site, it has sometimes been necessary to use the nearest actual transaction price available, e.g. prices of materials supplied and fixed.

8 The GST is excluded from all the prices recorded in the current producer price indexes because, in the main, it is deductible on business-to-business transactions. In the case of future service industry output indexes relating to business-to-household transactions, the GST will also be excluded because the pricing basis will be basic prices (i.e. exclusive of product taxes).

Items and weights

9 The indexes are fixed weighted indexes of the Laspeyres form. The list of items and the weights are updated periodically to ensure they remain representative. New index series compiled using updated weights are linked to the previous series to maintain a continuous series. Broad level weights are derived from an analysis of the latest available input-output tables as well as other ABS and industry sources.

10 Where prices of items are expected to move in a similar way, many of the directly priced items carry not only their own weight but also the weight of similar commodities.

Price measurement

11 The main sources of ongoing price data are samples of businesses. The samples can relate to either buyers or sellers, or a combination of both. The choice is influenced by the pricing point of the index (output or input) and practical considerations such as the relative degree of concentration of buyers, and of sellers, and the implications for sample sizes and costs.

EXPLANATORY NOTES *continued*

Price measurement continued

12 The main pricing methodology used is specification pricing, under which a manageable sample of precisely specified products is selected, in consultation with each reporting business, for repeat pricing. In specifying the products, care is taken to ensure that they are fully defined in terms of all the characteristics which influence their transaction prices. As such, all the relevant technical characteristics need to be described (e.g. make, model, features) along with the unit of sale, type of packaging, conditions of sale (e.g. delivered, payment within 30 days), etc.

13 When the quality or the specifications of an item being priced change over time, adjustments are made to the reported prices so that the index captures only pure price change. That is, any element of price change attributable to a change in quality is removed. If there is an increase (decrease) in the quality of an item, then the price is adjusted downwards (upwards) to reflect the 'worth' of the quality change. This technique is known as pricing to constant quality.

14 Another very important consideration in establishing and maintaining price collections is to ensure that the prices reported are actual market transaction prices. That is, they must reflect the net prices received (or paid) after taking into account all discounts applied to the transactions whether they be volume discounts, settlement discounts or competitive price cutting discounts which are likely to fluctuate with market conditions.

15 Any rebates also need to be considered. The collection of nominal list prices, or book prices, is unlikely to yield reliable price indexes and could result in quite misleading results if fluctuations in transaction prices are not captured. The ABS therefore asks respondent businesses to report details of the discounts they offer so that actual transaction prices can be calculated. In addition, as many different types of discounts apply to business-to-business transactions (see paragraph 14), considerable effort is put into monitoring discount practices in order to identify changes to existing discounts and the introduction of new ones.

16 Specification pricing is not feasible in cases where the products are unique and not reproduced over time, e.g. construction industry output and many of the customised business services. As a result alternative pricing techniques need to be used, often involving compromise. Some of the approaches adopted include the use of model pricing, collecting unit values for reasonably homogeneous components of a good or service, input pricing and collecting charge-out rates (e.g. for a legal service).

Classifications

17 As far as possible the industry sector indexes have been constructed in accordance with the *Australian and New Zealand Standard Industrial Classification* (ANZSIC). The Stage of Production 'contribution to change' tables (tables 5-9) are also presented in terms of the ANZSIC.

STAGE OF PRODUCTION (SOP) PRODUCER PRICE INDEXES

Introduction

18 Tables 1-9 present producer price indexes for the supply of commodities to the Australian economy in a stage of production (SOP) framework. As such, the indexes cover both domestically produced and imported commodities, individually and in aggregate. The SOP indexes are compiled from data used in the industry sector indexes, the international trade indexes and some additional data collections. The indexes are calculated on the reference base 1998-99=100.0.

19 These indexes are compiled within the statistical framework outlined in the 1997 *ABS Information Paper: An Analytical Framework for Price Indexes in Australia* (cat. no. 6421.0) and are designed to support the study of inflation.

20 A more detailed explanation of the SOP concept is contained in the *ABS Information Paper: Producer Price Index Developments* (cat. no. 6422.0), released on 25 March 1999. The index numbers in this current publication cannot be directly compared with the experimental index numbers in the information paper because:

EXPLANATORY NOTES *continued*

Introduction continued

- the coverage of the series has been expanded to include selected service and construction industries; and
- the weighting patterns of the indexes have been updated to 1996–97 and the reference base of the indexes has been updated to 1998–99=100.0.

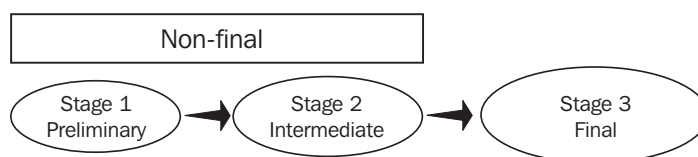
Pricing basis

21 In concept the valuation basis of the SOP indexes is basic prices (see paragraphs 4–8). However, the use of component series from existing ABS price collections in some cases results in the pricing basis diverging from this ideal. For example, imports are priced on a 'free-on-board' (f.o.b) basis, not 'cost, insurance, freight' (c.i.f), which approximates basic prices.

The SOP concept

22 The indexes are compiled using the SOP concept. Under this concept flows of commodities are categorised according to their economic destination on a sequential basis along the production chain. The basis for the categorisation is the Australian input–output tables (1996–97). The primary categorisation is between final commodities (i.e. commodities destined for final consumption, capital formation or export) and non-final commodities (i.e. commodities that flow into intermediate consumption for further processing).

23 This initial breakdown of the commodity flows into final and non-final represents a useful economic dissection of producers' transactions. However, the non-final commodities can flow into the production of both final and other non-final commodities. Therefore, to aid analysis, the non-final commodity flows have been divided on a sequential basis between Stage 1 (or preliminary) commodities and Stage 2 (or intermediate) commodities as illustrated below. This approach results in three separate stages of production.



24 The three stages are not aggregated in order to avoid the potential distorting effects that may result from multiple counting of changes in transaction prices as commodities flow through different production processes.

25 Under this framework, preliminary (Stage 1) commodities are used in the production of intermediate (Stage 2) commodities; in turn intermediate (Stage 2) commodities flow into the production of final (Stage 3) commodities.

26 The framework allows for analyses of price change as commodities flow through production processes. Price changes for earlier stages of production may be indicators of possible future price changes for later stages.

Transaction flow approach

27 The ABS has adopted a transaction flow approach in disaggregating commodity supply into the various production stages. This approach means that the assignment of a commodity to a stage is based on the proximity of its use in final demand.

28 Alternative degree of fabrication or principal destination approaches are employed by statistical agencies in some other countries. These approaches result in the allocation of particular commodities to one, and only one, stage. This would present particular problems for Australia due to the openness of the economy, with exports (and imports) equivalent to about 20% of gross domestic product. Commodities such as wheat, wool, and iron ore are exported in large volumes as well as being further processed locally. The allocation of such commodities to a single stage would be very arbitrary by necessity.

EXPLANATORY NOTES *continued*

Transaction flow approach continued

29 Adopting the transaction flow approach means, for example, that exported wheat and domestically used wheat are treated as different commodities for index construction purposes. Under this approach commodities transactions can be allocated to more than one stage. Exported wheat is treated as a final (Stage 3) commodity while wheat used domestically to make the flour used in bread production is considered to be a preliminary (Stage 1) commodity. Similarly, commodities such as energy and containers appear under all three categories.

Scope and coverage

30 Producer price indexes conventionally relate to the output of domestic industries, at basic prices, either inclusive or exclusive of exports. As the main focus is on domestic inflation, exports are excluded from the headline SOP series 'Final (Stage 3) commodities', as presented in the key figures on the front page and in tables 1–6. Index series for Final (Stage 3) commodities including exports are available in tables 26 & 27 on the ABS web site <www.abs.gov.au>.

31 Imports have also been incorporated within the framework, recognising that they represent an important potential source of inflationary pressure.

32 In concept, the SOP indexes incorporate all flows of goods and services. However, currently there is limited coverage of service industries and the construction industry by the producer price indexes (see sections on construction industry and service industries producer price indexes below).

33 Price indexes for most transport and storage services (division I of ANZSIC) and property and business services (division L of ANZSIC) industries have been included in the SOP framework. However, price series for most Final (Stage 3) consumer services are not currently available on a sufficiently timely basis to allow their inclusion in the indexes. This has the effect of decreasing the relative weight of consumer items versus capital items in the final stage. It is intended to introduce additional services price series as they become available, along with the consequential weight changes.

34 Index coverage for the construction industry (division E of ANZSIC) is currently limited to the output of the following ANZSIC classes:

- 4111 House construction;
- 4112 Residential building construction n.e.c.;
- 4113 Non-residential building construction; and
- 4121 Road and bridge construction.

35 As with services, it is intended to introduce further construction price series as they become available.

Items and weights

36 The items included in the indexes reflect the values of commodity flows, for both domestic supply and imports, allocated to stages based on an analysis of detailed 1996–97 input–output tables. The index structures and weighting patterns for the SOP indexes are shown in the Appendix of the December 2002 issue of *Producer Price Indexes, Australia* (cat. no. 6427.0).

Comparisons with the Consumer Price Index

37 Final (Stage 3) indexes are presented for consumer commodities. It should be noted that this index is not directly comparable with the Consumer Price Index (CPI). The two indexes differ significantly in concept and coverage. The major differences are:

- the pricing basis for the Final (Stage 3) SOP consumer index is basic prices (see paragraph 21). The CPI, however, measures changes in purchasers' prices, i.e. the actual retail prices paid by households for products, inclusive of non-deductible taxes on products, such as the GST, and any transport and trade margins;
- the coverage of the two indexes differs. Currently the Final (Stage 3) SOP consumer index mainly measures changes in the prices of goods, i.e. most household services are currently excluded from the index (see paragraph 33). The CPI covers both goods and services;

EXPLANATORY NOTES *continued*

*Comparisons with the
Consumer Price Index
continued*

- the indexes have different weighting bases. The weighting pattern for the Final (Stage 3) SOP consumer index is based on the 1996–97 input-output tables, while the CPI weighting pattern is based on the 1998–99 Household Expenditure Survey.

MANUFACTURING INDUSTRY PRODUCER PRICE INDEXES

Introduction

38 The manufacturing industry producer price indexes relate to the outputs (i.e. articles produced) and inputs (i.e. materials used) of establishments classified to designated sectors of the Australian manufacturing industry. They are important sources of data for the SOP indexes.

39 Tables 10 and 11 present the Price Indexes of Articles Produced by Manufacturing Industries and tables 12–14 present the Price Indexes of Materials Used in Manufacturing Industries. Basic prices are used for the output index and purchasers' prices for the input index (see paragraphs 4–8). Therefore, as far as possible, ex-factory prices are included in the output index and delivered into factory prices in the input index.

40 Table 47, which is available on the ABS web site, presents Price Indexes of Copper Materials used in the manufacture of electrical equipment.

41 All of the manufacturing indexes are calculated on the reference base 1989–90=100.0.

Scope

42 The manufacturing indexes are constructed on a net sector basis with intra-sector transactions netted out. The scope of the output index is therefore restricted to transactions in articles produced by the defined sector of Australian manufacturing industry that are sold or transferred to domestic establishments outside that sector, or used as capital equipment, or exported. The scope of the input index relates to transactions in materials used in the defined sector of Australian manufacturing industry that are produced by domestic establishments outside that sector or imported.

Classification

43 The manufacturing division output index (table 10) measures changes in prices of articles produced by establishments classified to ANZSIC division C, Manufacturing, that are sold or transferred to domestic establishments outside the manufacturing division for intermediate use, or used as capital equipment, or exported. It excludes intermediate transactions in articles produced by establishments within the manufacturing division and sold or transferred to other establishments within the manufacturing division for further processing.

44 Similarly, the manufacturing division input index (tables 12 and 13) measures changes in prices of materials used by establishments classified to ANZSIC division C, Manufacturing, that have been purchased or transferred in from domestic establishments outside the manufacturing division or imported. It excludes intermediate transactions in materials produced by establishments within the manufacturing division and sold or transferred to other establishments within the manufacturing division for further processing.

45 An advantage of the net sector approach over the alternative gross sector approach (under which the intra-sector transactions would be in-scope) is that it avoids the potential distorting effects that may result from multiple counting of changes in transaction prices as commodities flow through different production processes.

46 On the other hand, although conceptually valid, the exclusion of the internal intermediate transactions from the net sector manufacturing division indexes results in incomplete coverage of the targeted sector of the economy. In order to increase coverage, while still avoiding the multiple counting issue, independent net sector measures have been constructed for ANZSIC manufacturing subdivisions and groups. While having intermediate transactions between different manufacturers within a given subdivision or group netted out, intermediate transactions with manufacturers in other subdivisions/groups are in-scope.

EXPLANATORY NOTES *continued*

Classification continued

47 The output indexes for ANZSIC subdivisions and groups (table 11) measure changes in prices of articles produced by establishments classified to each defined ANZSIC manufacturing sector which are sold or transferred to establishments outside that sector. These exclude intermediate transactions in articles produced by establishments within the specific sector and sold or transferred to other establishments in the same sector for further processing.

48 Similarly, the input indexes for ANZSIC subdivisions and groups (table 14) measure changes in prices of materials used by establishments classified to each defined ANZSIC manufacturing sector which are purchased or transferred in from establishments outside that sector. These exclude intermediate transactions in materials produced by establishments within the specific sector and sold or transferred to other establishments in the same sector for further processing.

49 It is important to note that the manufacturing division output and input indexes, and the corresponding subdivision/group indexes, are independent constructs. As such, a division index cannot be derived by simply weighting together the separate subdivision and group indexes as the latter net sector indexes are not a straightforward decomposition of the broader net sector index.

Items and weights

50 The items included in the manufacturing indexes reflect the values of articles produced and materials used based on an analysis of detailed input-output tables; 1993-94 for the output indexes and 1989-90 for the input indexes.

51 The index structures and weighting patterns are shown in Appendix A of the September quarter 2000 issue of the former publication *Price Indexes of Articles Produced by Manufacturing Industry, Australia* (cat. no. 6412.0), and Appendix A of the July 1996 issue of the former publication *Price Indexes of Materials Used in Manufacturing Industries, Australia* (cat. no. 6411.0).

CONSTRUCTION INDUSTRY PRODUCER PRICE INDEXES *Introduction*

52 The construction industry producer price indexes relate to the outputs (e.g. buildings) and the inputs (i.e. materials used) of establishments classified to designated sectors of the Australian construction industry. They are important sources of data for the SOP index.

53 Table 15 presents the Price Index of the Output of the General Construction Industry, and Table 16 presents price indexes of the outputs of the constituent industries of this ANZSIC subdivision. Tables 17 and 18 present the Price Index of Materials Used in House Building and tables 19 and 20 present the Price Index of Materials Used in Building Other than House Building. The pricing basis is basic prices for the output indexes and purchasers' prices for the input indexes (see paragraphs 4-8 above). Therefore, as far as possible, builders' selling prices are reflected in the output index and delivered on site prices in the input indexes.

54 The output indexes are calculated on the reference base 1998-99=100.0 and the input indexes on the reference base 1989-90=100.0.

Scope

55 The Price Index of the Output of the General Construction Industry (table 15) measures changes in prices of the output of ANZSIC subdivision 41 - general construction. The price indexes in table 16 measure changes in the price of the output of constituent groups and classes of this subdivision. These groups and classes are: the building construction group (411), which consists of the classes house construction (4111), residential building construction n.e.c. (4112) and non-residential building construction (4113); and the non-building construction group (412), with the class of road and bridge construction (4121). Road and bridge construction is the sole contributor to the index for non-building construction until coverage can be extended to include the class of non-building construction n.e.c. (4122), which consists of railways, telecommunications, electricity infrastructure, etc.

EXPLANATORY NOTES *continued*

Scope continued

56 The first input index measures changes in prices of materials used in house building, where a house is defined as a detached building predominantly used for long-term residential purposes and consisting of only one dwelling unit. ANZSIC class 4111 (house construction) approximates the industry scope of the index.

57 The second input index measures changes in prices of materials used in other forms of building with a scope approximating ANZSIC class 4112 (residential building construction n.e.c.) and class 4113 (non-residential building construction), together.

58 Neither of the input indexes explicitly cover alterations, additions, renovations and repairs. They each relate to the statistical division for each State capital city.

Items and weights

59 The items included in the output indexes are chosen on the basis of work done, categorised by building function or type of construction and State of activity, as recorded in the ABS Construction Activity statistics for the five years ending 1998-99.

60 The items and weights for the house building input index were derived from reported values of each material used in selected representative houses in the three years ending 1992-93, with individual weighting patterns for each State capital city reflecting the differences in the relative usage of different materials. For the other than house building index, the items were selected and allocated weights in accordance with estimated values of materials used in the construction of buildings other than houses completed in each of the capital cities in the five years ended June 1992. This same weighting pattern is used for each of the six State capital cities.

61 The weighting patterns are set out in Appendix A of the December 1995 issue of the former publication *Price Index of Materials Used in House Building, Six State Capital Cities* (cat. no. 6408.0), and Appendix A of the October 1993 issue of the former publication *Price Index of Materials Used in Building Other than House Building, Six State Capital Cities* (cat. no. 6407.0).

MINING INDUSTRY PRODUCER PRICE INDEXES

62 Table 21 presents Price Indexes of Materials Used in Coal Mining. The pricing basis of the index is purchasers' prices (see paragraphs 4-8) and, as far as possible, the prices included in the index for items are delivered to the mine site or to the primary storage area for a group of mines.

63 The items included in the indexes reflect the value of materials used in the operation of open cut and underground coal mines in Australia during 1999-2000. The index structures and weighting patterns are available on request.

64 The indexes are calculated on the reference base 1989-90=100.0.

SERVICE INDUSTRIES PRODUCER PRICE INDEXES

Introduction

65 Tables 22-25 present producer price indexes for the output of the transport (freight) & storage division, and the property & business services division of the ANZSIC. Included are index numbers for each of the divisions and subdivisions. Transport indexes presented cover freight and services to transport activities only, i.e. passenger transport is excluded. The pricing basis of the indexes is basic prices (see paragraphs 4-8), and so the prices used in the index relate to the amount received by the service provider. The indexes are important sources of data for the SOP indexes. The index numbers are calculated on the reference base 1998-99=100.0.

66 These indexes represent the results to date of a program to progressively extend the scope of the producer price indexes into the service sectors of the economy. First results from the program were published in March 1999, by way of experimental indexes, in the ABS *Information Paper: Producer Price Index Developments* (cat. no. 6422.0).

EXPLANATORY NOTES *continued*

Scope

67 The transport (freight) & storage division and property & business services division indexes measure changes in prices of services provided by establishments classified respectively to ANZSIC division I, transport (freight) & storage and ANZSIC division L, property & business services. Index numbers for these divisions are provided in tables 22 and 24 respectively.

68 Tables 23 and 25 contain index numbers for the subdivisions of ANZSIC division I, transport (freight) & storage, and the subdivisions and groups of ANZSIC division L, property & business services, respectively. Indexes at the ANZSIC group and class level for division I, and the ANZSIC class level for division L, are also available on the ABS web site <<http://www.abs.gov.au>> under catalogue 6427.0, in tables 45 and 46 respectively. Note that some ANZSIC classes within these divisions do not yet have established indexes, and thus are not represented within these tables.

Items and weights

69 ANZSIC class indexes are aggregated to the relevant group, subdivision and division using weights derived from 1996–97 input-output domestic production values, in combination with data from other ABS surveys and industry sources. Where ANZSIC class indexes have not yet been developed, their weight is spread proportionately across the relevant group, subdivision or group of subdivisions dependent on an assessment of what is most appropriate given the activities of the particular class.

Price measurement

70 The development of these new price collections has involved a wide range of diverse industries with different measurement problems. Accordingly, extensive consultation with industry associations and individual businesses has been undertaken to determine the most viable approach, on a case-by-case basis.

71 Characteristics found within the services sector of the economy have complicated the task of price measurement.

72 The tendency within many industries to provide unique, one-off services tailored to the needs of individual customers has posed difficulties in establishing continuity of pricing to constant quality.

73 The 'bundling' of a range of different component services within the one transaction or contract has required investigation of the feasibility of 'unbundling', that is, obtaining separate prices for each of the components of the total service. Where this has not proven to be feasible, the whole service bundle has been priced in total.

74 Respondent businesses are asked to report details of any discounts they offer so that actual transactions prices can be calculated. However, as discounts are sometimes negotiated between individual buyers and sellers in relation to particular transactions, identifying discounts has not always been straightforward.

75 The deregulation of some service industries leads to structural changes and more complex pricing practices. To deal with this, samples are continually updated to incorporate new businesses and pricing methodologies are reviewed over time.

Future developments

76 It is planned to make available indexes for the majority of remaining ANZSIC classes within the transport (freight) & storage division and property & business services division after they have been developed from experimental to production status. At such time these new indexes would contribute to the broader group, subdivision and division indexes presented in this publication. Those ANZSIC classes for which development of a price index is not considered feasible will continue to have their weight distributed for aggregation purposes as described in paragraph 69. Work has also commenced on developing indexes for other divisions of the ANZSIC.

INDEX NUMBERS

77 Index numbers for financial years are simple averages of the relevant quarterly index numbers.

EXPLANATORY NOTES *continued*

INDEX NUMBERS *continued*

78 Indexes for the Price Index of Materials Used in House Building and the Price Index of Materials Used in Building Other than House Building are presented separately for each of the six State capital cities. These city indexes measure price movements over time for each city. They do not measure differences in price levels between cities.

ANALYSIS OF INDEX CHANGES

79 Care should be exercised when interpreting quarter-to-quarter movements in the indexes as short-term movements do not necessarily indicate changes in trend.

80 Movements in indexes from one period to another can be expressed either as changes in 'index points' or as percentage changes. The following example illustrates the method of calculating index points changes and percentage changes between any two periods:

81 Stage of Production: Final commodities index numbers —

September quarter 2003	111.3 (see table 1)
less September quarter 2002	109.7 (see table 1)
Change in index points	1.6
Percentage change	$1.6/109.7 \times 100 = 1.5$

82 Tables 5, 6 and 7 provide analyses of the index points contribution which ANZSIC groups make to the stage of production final commodities indexes, in total, and then separately for domestic and imported commodities. For example, in table 5 petroleum refining contributed 1.99 index points to the Total Final commodities index number of 111.3 for September quarter 2003 and 0.12 index points to the net change of 0.6 index points between June and September quarters 2003.

83 Tables 8 and 9 analyse the contributions to the intermediate and preliminary commodities index numbers, respectively.

84 Similar contribution tables are available on request for most of the industry sector indexes (see paragraph 88 below).

FURTHER INFORMATION

85 Further information on recent price index developments in the ABS is presented in the following publications:

An Analytical Framework for Price Indexes in Australia, cat. no. 6421.0

Producer Price Index Developments, cat. no. 6422.0

Review of the Import Price Index and Export Price Index, Australia, cat. no. 6424.0

Price Indexes and The New Tax System, cat. no. 6425.0

RELATED PUBLICATIONS

86 Users may also wish to refer to the following related publications, which are available from ABS bookshops:

International Trade Price Indexes, Australia, cat. no. 6457.0

Consumer Price Index, Australia, cat. no. 6401.0

Wage Cost Index, Australia, cat. no. 6345.0

Australian National Accounts, Input-Output Tables, cat. no. 5209.0

Balance of Payments and International Investment Position, Australia,
cat.no.5302.0

87 Current publications and other products released by the ABS are listed in the *Catalogue of Publications and Products* (cat. no. 1101.0). The Catalogue is available from any ABS office or the ABS web site <<http://www.abs.gov.au>>. The ABS also issues a daily *Release Advice* on the web site which details products to be released in the week ahead.

ABS DATA AVAILABLE ON REQUEST

88 As well as the statistics included in this and related publications, the ABS has available other price index series (many at a detailed commodity level). Inquiries should be made to Steve Whennan 02 6252 6251.

FOR MORE INFORMATION . . .

- INTERNET* **www.abs.gov.au** the ABS web site is the best place to start for access to summary data from our latest publications, information about the ABS, advice about upcoming releases, our catalogue, and Australia Now—a statistical profile.
- LIBRARY* A range of ABS publications is available from public and tertiary libraries Australia-wide. Contact your nearest library to determine whether it has the ABS statistics you require, or visit our web site for a list of libraries.
- CPI INFOLINE* For current and historical Consumer Price Index data, call 1902 981 074 (call cost 77c per minute).
- DIAL-A-STATISTIC* For the latest figures for National Accounts, Balance of Payments, Labour Force, Average Weekly Earnings, Estimated Resident Population and the Consumer Price Index call 1900 986 400 (call cost 77c per minute).

INFORMATION SERVICE

Data already published that can be provided within five minutes will be free of charge. Our information consultants can also help you to access the full range of ABS information—ABS user pays services can be tailored to your needs, time frame and budget. Publications may be purchased. Specialists are on hand to help you with analytical or methodological advice.

- PHONE* 1300 135 070
- EMAIL* client.services@abs.gov.au
- FAX* 1300 135 211
- POST* Client Services, ABS, GPO Box 796, Sydney NSW 2001

WHY NOT SUBSCRIBE?

ABS subscription services provide regular, convenient and prompt deliveries of ABS publications and products as they are released. Email delivery of monthly and quarterly publications is available.

- PHONE* 1300 366 323
- EMAIL* subscriptions@abs.gov.au
- FAX* 03 9615 7848
- POST* Subscription Services, ABS, GPO Box 2796Y, Melbourne Vic 3001



2642700009037

ISSN 1445 2618

RRP \$24.00